



Welcome



This is our second newsletter for the Aberaeron Coastal Defence Scheme which aims to provide an overview of the upcoming works.

If you would like to view our newsletters please scan:

English:

Welsh:



BAM Nuttall will be working in partnership with Ceredigion County Council and AtkinsRéalis Design Consultancy to deliver Aberaeron Coastal Defence Scheme.

Photography: Andrew Chittock

Aberaeron coastal sea defence rock deliveries



The rising sea levels and storms pose a serious threat to our seaside town of Aberaeron. Implementing this scheme will improve the level of protection afforded to the many businesses and homes in the town and will preserve the unique and historical character of the area for future generations.

It is anticipated the project will in total require 120,000 tonnes of rock to build the new Coastal Defence. The delivery of rock is a significant component of the Aberaeron Coastal Defence Project. BAM has sourced the smaller rock from a local quarry at Ystrad Meurig in Ceredigion. The larger rock has been procured from Norway and France as

this particular type of rock is not available in the UK. The larger rock armour will arrive by sea, with approximately ten deliveries in total. This rock armour is of the

highest quality and is widely sourced for similar coastal defence projects across the UK.



Rock delivery supporting Welsh business.



BAM is eager to support the local economy by using locally sourced rock which will benefit the local towns and businesses. The project supports local employment, via hauliers, quarry production staff, plant operators, including garages, shops, cafes etc along the route from the quarry into Aberaeron.

BAM has maximised the quantity of stone being delivered by road to ensure the local economy gains maximum benefit whilst supplementing with delivery by sea for the larger size rock to ensure programme delivery and minimise disruption to the local area.

The arrival of the barge and tug boats has attracted much attention from local people and tourists visiting Aberaeron. The arrival of the second barge 'Edmy' carrying up to 6,800 tonne was well received by the local primary school trip to watch the diggers, boats and dumper trucks in action.



Ysgol Gynradd Aberaeron primary school trip to see the barge

Traffic management

We are making every effort to minimise our impact on residents and visitors to Aberaeron while we work on the flood defences. However, there is a need to manage traffic and pedestrians to allow us safe working areas and protect the public. The temporary restrictions will remain in place until the end of the year.



Demolishing wall at Quay Parade

Photography by Andrew Chittock

What have we been doing?

- » We continue to receive rock deliveries by sea and road, stockpiling along the South Beach and at the North Breakwater
- » Removal of street furniture from Quay Parade and inner harbour walls
- » Demolition of existing Quay Parade Flood Wall
- » Removal of the groyne from south beach
- » Installed temporary cofferdam across entrance to Pwll Cam inner harbour.
- » Sheet Piling works along the river Aeron
- » Install sheet piling for protection of the proposed works at the South Pier head
- » Deliveries of large excavators and trucks.



Key upcoming works



April:

- » Marine deliveries of rock continue
- » Commencement of constructing of the North Breakwater
- » Commencement of reconstructing of the South Beach rock revetment
- » Drain the Pwll Cam Inner Harbour and create access within
- » Excavation and construction of the new harbour gate base slab
- » Commencement of the Pwll Cam Terrace wall excavation and construction
- » Grouting to Quay Parade harbour walls
- » Demolition of the South Pier Head.

Frequently asked questions



Why are we importing rock by sea?

BAM continues to source rock from a local quarry however quarries in the UK in general produce road stone, this is where the commercial market sits, to commercially produce roadstone you require blasting patterns in the quarry that produce small sized stone, this in turn makes large rock armour a by-product of this operation. To secure large volumes / tonnage of armour stone you have to look to the Norwegian and French market as they blast for larger stone in vast quantities.

Q: How long is the project expected to run for?

A: The works are expected to continue until the end of the year.

Q: How many sea deliveries of rock are expected?

A: There will be 10 barge deliveries by sea.

Q: What will South Beach look like when the project is complete?

A: South Beach will be re-profiled and reinstated as it was previously. The stockpile of rock and vehicle access ramps are all temporary and these rocks are destined to be used elsewhere in the scheme.

Q: When will Quay Parade, South Beach and the footbridge re-open?

A: The end of the year 2024.

May:

- » Continuing all the above
- » Excavation and construction of Quay Parade flood wall
- » Excavation and construction of the new concrete base to the South Pier Head
- » Commence building River Aeron wall new capping beam
- » South Beach - commence installation of new timber groynes
- » Commence construction of Pwll Cam Harbour Gate Abutment walls.

June:

- » Continuing all the above
- » Masonry Cladding starting at Pwll Cam Terrace and Quay Parade Walls.

BAM site meeting with Aberaeron Town Council



The site visit took place along Quay Parade and Pwll Cam. The Project Manager outlined the programme of works and responded to the Town Council's questions raised. BAM is committed to working with the Town Council and supporting local annual events that are held in Aberaeron.



BAM Project Manager Andy Pointon-Bell, Senior Works Manager, Keith Hughes and Public Liaison Officer, Gwen Clements met with Aberaeron Town Council Mayor Cllr Rhodri Jones, Cllr Elizabeth Evans and Aberaeron Town Council Clerk Denfer Morgan.

“ After many years of waiting for this project to begin, it is a very strange feeling to see BAM Nuttall on site. The demolition of the famous Quay Parade wall and parts of South Pier, and the work on south beach and Pwll Cam, reminds us all of just how large this project is, and how important it is to the future viability of Aberaeron. ”

Cllr Elizabeth Evans
Aberaeron Town Council



Celebrating International Women’s Day A Global celebration of the achievements of women



At BAM our aim is to create a truly inclusive culture for everyone - where a wide diversity of skills, experiences, and perspectives are welcomed and valued, and everyone is supported to reach their full potential.

We asked some of our team currently working at the Aberaeron Coastal Defence Project to tell us about their daily tasks in a typical day on site.

- Sets out project works according to designs and specifications
- Surveys new and existing infrastructure for design and records
- Monitors quality of works and keeps quality records
- Produces method statements and risk assessments for site operations
- Monitors and minimises environmental impacts of site works.

SOPHIE RICE
Trainee Engineer



#INWED21 INTERNATIONAL WOMEN IN ENGINEERING DAY 23 June 2023

- Conducts site checks for protected and priority species in the area eg seal pups
- Briefs the team on methods of working to mitigate for environmental impacts
- Conducts watching briefs to ensure works are in line with Marine Licence Method Statements and Environmental Management Plan
- Identifies potential ecological constraints eg nesting birds
- Provides environmental advice
- Undertakes periodic reassessment of mitigation measures.

ABBY PILKINGTON
Ecological Clerk of Works / Ecologist



#INWED21 INTERNATIONAL WOMEN IN ENGINEERING DAY 23 June 2023

- Negotiates subcontract works packages: Arranges enquiry packs, invites / evaluates tenders and agrees terms and conditions
- Processes subcontract payments
- Monitors costs against forecasts and creates reports for review
- Facilitates the use of new suppliers to help deliver our works
- Identifies additional entitlement against our main contract and minimises liability against outgoing costs.

ABBY DAVIES
Quantity Surveyor



#INWED21 INTERNATIONAL WOMEN IN ENGINEERING DAY 23 June 2023

- Record keeping
- Clears invoices for payment
- Deals with enquiries in a timely manner
- Raises requisitions for site
- Discusses ways to improve profitability within the division
- Implements the focus on Safety at Work
- Training to become Office Manager.

MICHELLE LYONS
Commercial Assistant / Cost Clerk



#INWED21 INTERNATIONAL WOMEN IN ENGINEERING DAY 23 June 2023

- Receives and responds to public enquiries and complaints
- Engages with local stakeholders and business
- Identifies local community groups and community benefits
- Arranges educational presentations for schools and youth groups
- Provides information notices and newsletters to display around the town.

GWEN CLEMENTS
Public Liaison Officer



#INWED21 INTERNATIONAL WOMEN IN ENGINEERING DAY 23 June 2023

Photography by Andrew Chittock

BAM PLO meets Ceredigion WI on International Women’s Day before they set off on their charity walk for a local charity HAAV. The group were interested to learn about the arrival of the barge from Norway and hear about the project.



If you are interested in a career with BAM please check out our website BAM Jobs and Careers.

Scan here



Construction gallery



South Pier Installing the Cofferdam



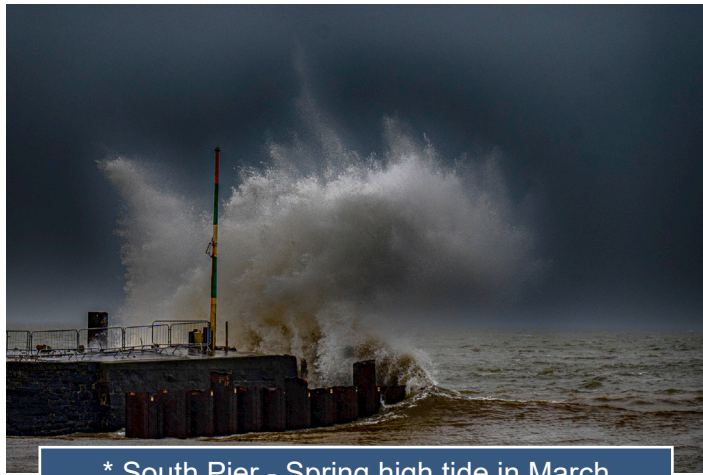
* Unloading the rock armour from the barge



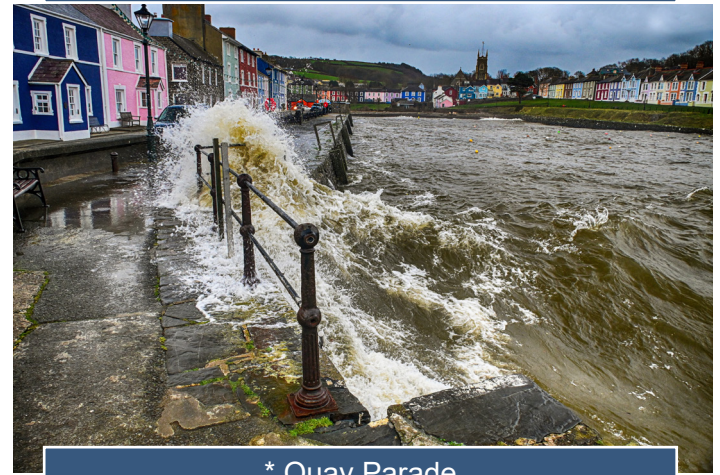
Ystrad Meurig Quarry



Installing permanent sheet piles along River Aeron



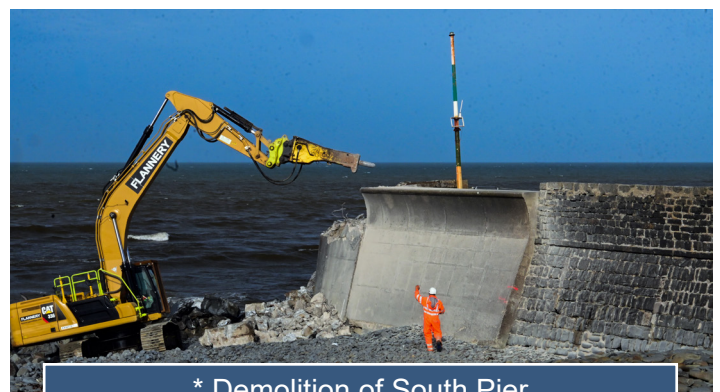
* South Pier - Spring high tide in March



* Quay Parade



* Temporary rock stockpile to support the temporary access road along South Beach



* Demolition of South Pier

* Photography by Andrew Chittock



OUR TEAM



Contracts Manager

Ray Jones

Project Manager

Andrew Pointon-Bell

Quantity Surveyor

Abby Davies

Works Manager

Keith Hughes

General Foreman

Damion Hopkins

Site Agent

Emyr Thomas

Public Liaison Officer

Gwen Clements

Environmental Advisor

John Clancy

OUR PARTNERS

Ceredigion County

Council:

Project Manager

Alan Haird

AtkinsRéalis Design

Consultancy:

Project Manager

Steffan Davies

Design Manager

Matthew Tierney

About BAM



BAM UK and Ireland is one of the UK's largest construction services organisations. BAM operates from regional offices covering England, Scotland and Wales, and is active in construction, services engineering, design, facilities management, property development, and plant hire.

Environment and community



Through the adoption of a responsible and proactive attitude to environmental issues BAM is committed to minimising any potentially harmful effects of its business activities on the environment and contributing to sustainable development through balancing its business aims with environmental considerations. BAM will comply with, and where possible, exceed legal and other requirements to which it subscribes, in relation to its environmental aspects and engaging communities in the project.

Considerate Constructors



All BAM sites register with the Considerate Constructors Scheme. This means we are committed to being a good neighbour and to being clean, respectful, safe, environmentally conscious, responsible, and accountable. Our site is independently inspected to make sure we live up to these aims.

We try to work in a way that causes as little inconvenience as possible to our neighbours. We apologise for any unavoidable nuisance that may be caused during the work.

Contact Us

It is our intention to complete these works with minimal disruption. However, if you have any concerns, please contact our Public Liaison Officer who is available to assist.

Gwen Clements:



07585 633799



Aberaeron.plo@bam.com

You can sign up for email updates by emailing aberaeron.plo@bam.com and confirming that you would like to receive updates and a copy of future Newsletters.

For more information about BAM Nuttall Limited:

Scan here

