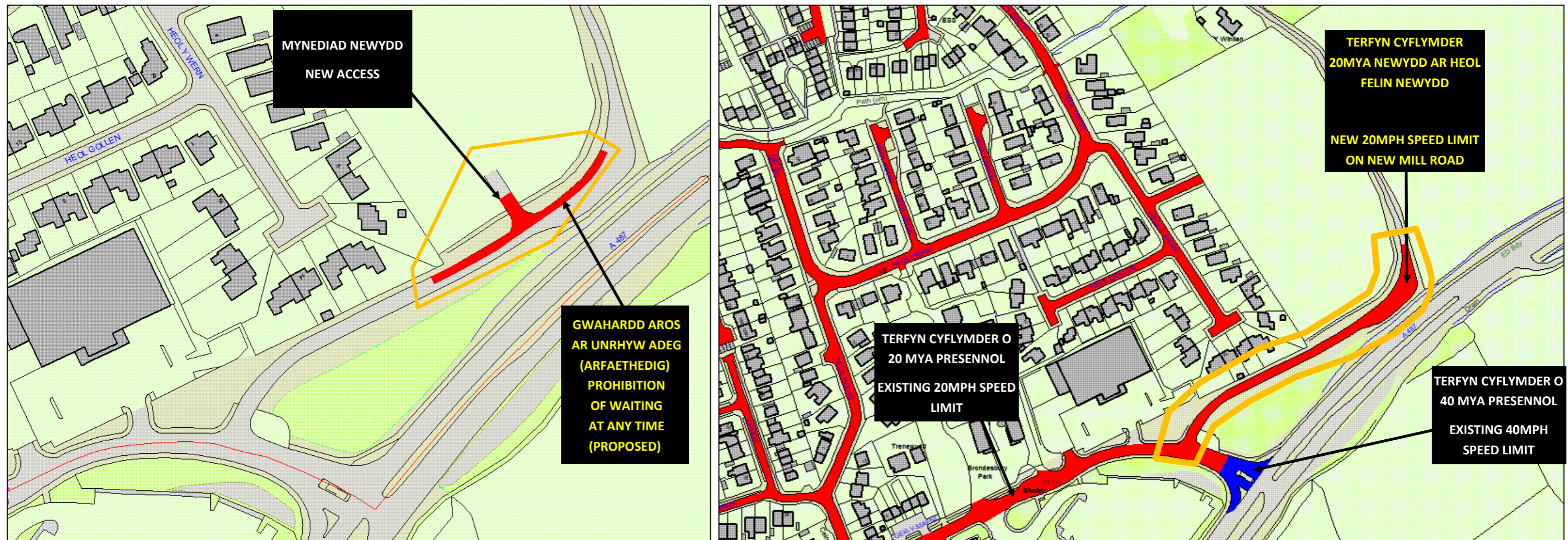


CYNGOR SIR CEREDIGION COUNTY COUNCIL



CYNGOR SIR CEREDIGION

Mae'r Cyngor yn bwriadu gwneud Gorchymyn Cyngor Sir Ceredigion (Gwahardd a Chyfyngu ar Aros a Llwytho a Dadlwytho) 2019 (Heol Felin Newydd, Aberteifi) (Gorchymyn Diwygio Rhif 17) 202x , a Gorchymyn Cyngor Sir Ceredigion (Terfynau Cyflymder 20 mya, 30 mya, 40 mya a 50 mya a Ffyrdd a Ddatgyfyngwyd) (Cydgrynhoi) 2014 (Heol Felin Newydd, Aberteifi) (Gorchymyn Diwygio Rhif 28) 202x. Bydd y Gorchymynion hyn yn cyflwyno Gwaharddiad Parcio ar Unrhyw Amser newydd ar ochr gogleddol y ffordd o bwynt sydd 104m o'i chyffordd â Ffordd Aberystwyth am bellter o oddeutu 89m i bwynt sydd 193m o'r un gyffordd ac ymestyn y cyfyngiad cyflymder o 20mya ar hyd Heol Felin Newydd o'r chyffordd â Ffordd Aberystwyth i gyfeiriad y gogledd-ddwyrain i bwynt 210m o'r un gyffordd.

Gellir archwilio'r manylion ar-lein yn <http://www.ceredigion.gov.uk/preswylwr/teithio-ffyrdd-a-pharcio/gorchymyn-traffig-ffyrdd> ac yn Swyddfeydd y Cyngor yn Stryd Morgan, Aberteifi yn ystod oriau swyddfa arferol. Dylid anfon gwrthwynebiadau, gan nodi rhesymau'n ysgrifenedig, mynegiadau o gefnogaeth neu sylwadau eraill i clic@ceredigion.gov.uk neu'r Gwasanaethau Cyfreithiol, trwy law Ystafell y Post, Cyngor Sir Ceredigion, Penmorfa, Aberaeron, Ceredigion, SA46 0AP i'w cael erbyn 02/06/2026.

CEREDIGION COUNTY COUNCIL

The Council proposes to make the Ceredigion County Council (Prohibition and Restriction of Waiting and Loading and Unloading) Order 2019 (New Mill Road, Cardigan) (Amendment Order No. 17) 202x and the Ceredigion County Council (20 mph, 30 mph, 40 mph and 50 mph Speed Limits and Derestricted Roads) (Consolidation) Order 2014 (New Mill Road, Cardigan) (Amendment Order No. 28) 202x. The effect of these Orders will be to introduce a new Prohibition Of Parking At Any Time on the northern side of the road from a point 104m from its junction with Aberystwyth Road for a distance of 89m to a point 193m from the same junction, and to extend a 20mph speed limit along New Mill Road from its junction with Aberystwyth Road northeasterly to a point 210m from the same junction.

Details may be inspected online at <http://www.ceredigion.gov.uk/resident/travel-roads-parking/road-traffic-order> and at the Council Office on Morgan Street, Cardigan during normal office hours. Objections, stating reasons in writing, expressions of support or other comments to clic@ceredigion.gov.uk or Legal Services, c/o Postroom, Ceredigion County Council, Penmorfa, Aberaeron, Ceredigion, SA46 0PA to be received by 02/06/2026.