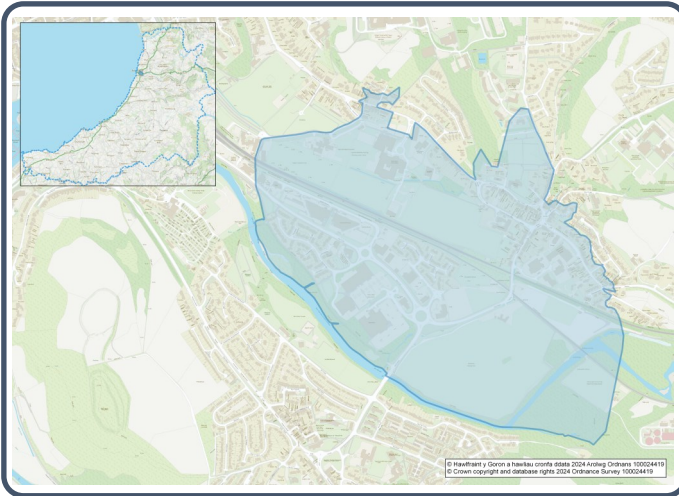


2021 Census Area Profiles – Lower Super Output Area (LSOA) W01001935 - Llanbadarn Fawr South



Population:



1,036 residents



Females

524



Males

512

**Population Change
(2011-2021)**

▼ -5.4%

**125
Students**

(people over 16 who are engaged in full-time courses of study in secondary, tertiary or higher education institutions)

16.4% aged 0 - 14

69.2% aged 15 – 64

14.4% aged 65+

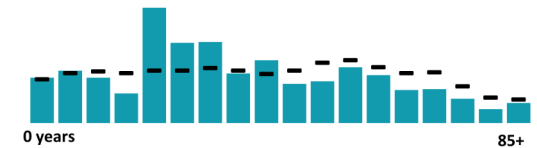
9.8% BAME

89.6% White

0.7% Other Ethnic Group

Age profile

■ Llanbadarn Fawr South – Wales



Health & Disability:



16.9%

Disabled under the Equality Act



6.8%

Day-to-day activities limited a lot



84.3%

In good or very good health



7.0%

Provides unpaid care

Households:



**488
Households**



1.8%

Households without central heating



42.4%

Households deprived in one or more deprivation dimensions



1.0% Overcrowded Households

Welsh Language:



42.1%

Can speak Welsh

Age breakdown of Welsh speakers

0-15: 8.5%

16-64: 26.6%

65+: 6.0%



45.3%

Have NO skills in Welsh

Economy:



**59.9%
Employment Rate**



**13.1%
Achieving level 2 qualification**



**35.3%
Economic Inactivity**



**8.6%
No Qualifications**

Demography, Ethnicity, Identity & Religion:

	LSOA		Ceredigion
	No.	%	%
Population			
Population 2021	1,036	-	71,475
Population 2011	1,095	-	75,922
<i>Population change (2011-21)</i>	- 59	- 5.4%	- 5.8%
Population density	1,000.0	-	40.0
Sex			
Males	512	49.4%	48.9%
Females	524	50.6%	51.1%
Age			
Aged 0 to 4	54	5.2%	3.8%
Aged 5 to 19	151	14.6%	16.1%
Aged 20 to 29	231	22.3%	14.0%
Aged 30 to 44	229	22.1%	13.8%
Aged 45 to 59	163	15.8%	19.3%
Aged 60 to 64	57	5.5%	7.2%
Aged 65 to 74	79	7.6%	13.9%
Aged 75 and over	70	6.8%	11.8%
Country of birth			
Born in UK	887	85.8%	92.9%
Born outside of UK	147	14.2%	7.1%
National Identity			
One or more UK identity	892	86.1%	93.4%
UK identity and non-UK identity	50	4.8%	1.7%
Non-UK identity	94	9.1%	4.9%
Religion			
Christian	419	40.5%	46.7%
No religion	490	47.4%	43.0%
Other religion	56	5.4%	2.6%

Housing & Household Composition:

	LSOA		Ceredigion
	No	%	%
Tenure			
Owned	246	50.5%	68.6%
Private rented	206	42.3%	20.6%
Social rented	33	6.8%	10.5%
Shared ownership	2	0.4%	0.3%
Lives rent free	0	0.0%	0.0%
Accommodation Type			
Detached	87	17.8%	50.7%
Semi detached	162	33.1%	23.1%
Terraced	125	25.6%	14.1%
Flat, maisonette or apartment	115	23.5%	11.3%
Caravan or other mobile temporary	0	0.0%	0.8%
Household composition			
One person household	184	37.7%	33.0%
Single family household	258	52.9%	60.4%
Other household types	46	9.4%	6.6%
Central Heating			
No central heating	9	1.8%	2.6%
Occupancy Rating			
Overcrowded households	5	1.0%	1.4%
Number of bedrooms			
1 bedroom	80	16.4%	7.4%
2 bedrooms	154	31.6%	23.6%
3 bedrooms	156	32.0%	42.5%
4+ bedrooms	98	20.1%	26.5%
Number of cars or vans			
No car or van	105	21.5%	15.7%
Deprivation			
Households deprived in one or more deprivation dimensions	207	42.4%	52.9%

Labour Market & Education:

	LSOA		Ceredigion
	No	%	%
Economic activity status			
Economically active (in employment)	489	57.1%	46.8%
Economically active (unemployed)	24	2.8%	1.8%
Economically inactive	302	35.3%	47.9%
<i>Retired</i>	155	18.1%	27.7%
<i>Student</i>	84	9.8%	10.0%
<i>Looking after home or family</i>	20	2.3%	3.5%
<i>Long-term sick or disabled</i>	31	3.6%	4.4%
Top 3 Industries			
Public administration, education and health	250	48.1%	35.1%
Distribution, hotels and restaurants	113	21.7%	21.8%
Other	47	9.0%	5.4%
Education			
No Qualifications (all aged 16+)	74	8.6%	14.7%
Qualifications Level 2+	112	13.1%	13.7%
Apprenticeship	41	4.8%	5.4%
Travel to Work			
Work mainly at/from home	152	29.5%	31.6%
Driving car/van	205	39.8%	51.1%
Bus	7	1.4%	1.3%
On foot	114	22.1%	10.0%