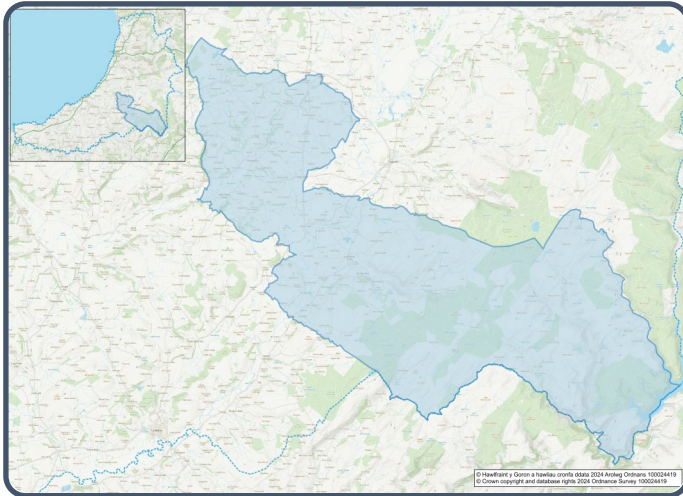


# 2021 Census Area Profiles – Lower Super Output Area (LSOA) W01000536 - Llangeitho



## Population:



**1,365 residents**



**Females**

**666**



**Males**

**699**

## Population Change (2011-2021)

**-6.4%**

**47 Students**

(people over 16 who are engaged in full-time courses of study in secondary, tertiary or higher education institutions)

**13.2% aged 0 - 14**

**57.7% aged 15 - 64**

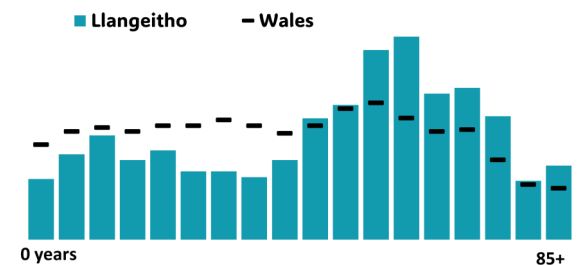
**29.1% aged 65+**

Age profile

**1.8% BAME**

**98.1% White**

**0.1% Other Ethnic Group**



## Health & Disability:



**22.9%**

**Disabled under the Equality Act**



**10.2%**

**Day-to-day activities limited a lot**



**75.5%**

**In good or very good health**



**14.1%**

**Provides unpaid care**

## Households:



**622 Households**



**2.7%**

**Households without central heating**



**56.6%**

**Households deprived in one or more deprivation dimensions**



**0.5% Overcrowded Households**

## Welsh Language:



**47.4% Can speak Welsh**

**Age breakdown of Welsh speakers**

**0-15: 8.1%**

**16-64: 27.6%**

**65+: 10.6%**



**41.6% Have NO skills in Welsh**

## Economy:



**53.6% Employment Rate**



**15.6% Achieving level 2 qualification**



**45.9% Economic Inactivity**



**15.2% No Qualifications**

## Demography, Ethnicity, Identity & Religion:

	LSOA		Ceredigion
	No.	%	%
<b>Population</b>			
Population 2021	1,365	-	71,475
Population 2011	1,459	-	75,922
<i>Population change (2011-21)</i>	- 94	- 6.4%	- 5.8%
Population density	9.0	-	40.0
<b>Sex</b>			
Males	699	51.2%	48.9%
Females	666	48.8%	51.1%
<b>Age</b>			
Aged 0 to 4	44	3.2%	3.8%
Aged 5 to 19	194	14.2%	16.1%
Aged 20 to 29	113	8.2%	14.0%
Aged 30 to 44	153	11.2%	13.8%
Aged 45 to 59	321	23.4%	19.3%
Aged 60 to 64	146	10.7%	7.2%
Aged 65 to 74	215	15.7%	13.9%
Aged 75 and over	184	13.4%	11.8%
<b>Country of birth</b>			
Born in UK	1,331	97.4%	92.9%
Born outside of UK	35	2.6%	7.1%
<b>National Identity</b>			
One or more UK identity	1,317	96.6%	93.4%
UK identity and non-UK identity	20	1.5%	1.7%
Non-UK identity	27	2.0%	4.9%
<b>Religion</b>			
Christian	677	49.6%	46.7%
No religion	537	39.4%	43.0%
Other religion	47	3.4%	2.6%

## Housing & Household Composition:

	LSOA		Ceredigion
	No	%	%
<b>Tenure</b>			
Owned	489	79.1%	68.6%
Private rented	97	15.7%	20.6%
Social rented	26	4.2%	10.5%
Shared ownership	6	1.0%	0.3%
Lives rent free	0	0.0%	0.0%
<b>Accommodation Type</b>			
Detached	473	76.0%	50.7%
Semi detached	87	14.0%	23.1%
Terraced	53	8.5%	14.1%
Flat, maisonette or apartment	6	1.0%	11.3%
Caravan or other mobile temporary	3	0.5%	0.8%
<b>Household composition</b>			
One person household	199	31.9%	33.0%
Single family household	385	61.8%	60.4%
Other household types	39	6.3%	6.6%
<b>Central Heating</b>			
No central heating	17	2.7%	2.6%
<b>Occupancy Rating</b>			
Overcrowded households	3	0.5%	1.4%
<b>Number of bedrooms</b>			
1 bedroom	16	2.6%	7.4%
2 bedrooms	136	21.9%	23.6%
3 bedrooms	267	42.9%	42.5%
4+ bedrooms	203	32.6%	26.5%
<b>Number of cars or vans</b>			
No car or van	46	7.4%	15.7%
<b>Deprivation</b>			
Households deprived in one or more deprivation dimensions	352	56.6%	52.9%

## Labour Market & Education:

	LSOA		Ceredigion
	No	%	%
<b>Economic activity status</b>			
Economically active (in employment)	598	51.1%	46.8%
Economically active (unemployed)	30	2.6%	1.8%
Economically inactive	537	45.9%	47.9%
<i>Retired</i>	374	31.9%	27.7%
<i>Student</i>	43	3.7%	10.0%
<i>Looking after home or family</i>	52	4.4%	3.5%
<i>Long-term sick or disabled</i>	45	3.8%	4.4%
<b>Top 3 Industries</b>			
Public administration, education and health	178	29.5%	35.1%
Agriculture energy and water	124	20.6%	9.0%
Distribution, hotels and restaurants	86	14.3%	21.8%
<b>Education</b>			
No Qualifications (all aged 16+)	179	15.2%	14.7%
Qualifications Level 2	183	15.6%	13.7%
Apprenticeship	74	6.3%	5.4%
<b>Travel to Work</b>			
Work mainly at/from home	216	35.8%	31.6%
Driving car/van	339	56.1%	51.1%
Bus	4	0.7%	1.3%
On foot	21	3.5%	10.0%