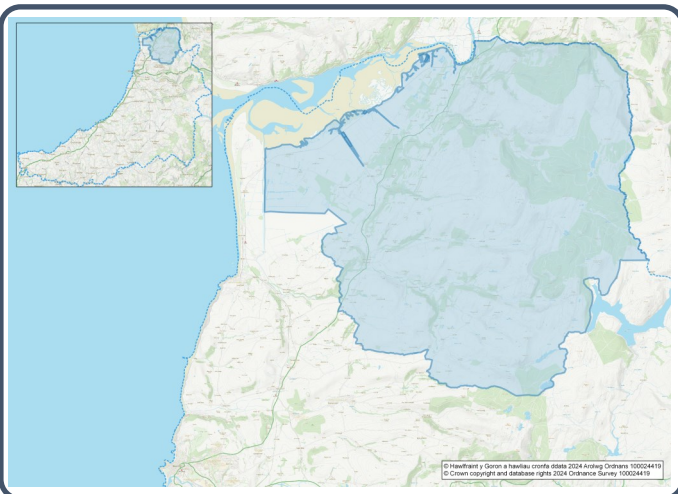


2021 Census Area Profiles – Lower Super Output Area (LSOA)

W01000523 - Ceulan a Maesmawr



Population:



1,863 residents



Females

970



Males

894

Population Change
(2011-2021)

-2.5%

83

Students

(people over 16 who are engaged in full-time courses of study in secondary, tertiary or higher education institutions)

15.0% aged 0 - 14

60.9% aged 15 - 64

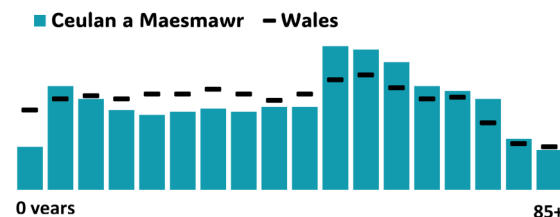
24.1% aged 65+

1.9% BAME

97.9% White

0.2% Other Ethnic Group

Age profile



Health & Disability:



19.7%

Disabled under the Equality Act



7.6%

Day-to-day activities limited a lot



81.9%

In good or very good health



11.6%

Provides unpaid care

Households:



798

Households



4.9%

Households without central heating



50.4%

Households deprived in one or more deprivation dimensions



1.8% Overcrowded Households

Welsh Language:



52.3%

Can speak Welsh

Age breakdown of Welsh speakers

0-15: 10.9%

16-64: 32.2%

65+: 8.4%



35.9%

Have NO skills in Welsh

Economy:



59.4%

Employment Rate



12.7%

Achieving level 2 qualification



39.3%

Economic Inactivity



12.2%

No Qualifications

Demography, Ethnicity, Identity & Religion:

	LSOA		Ceredigion
	No.	%	%
Population			
Population 2021	1,863	-	71,475
Population 2011	1,910	-	75,922
Population change (2011-21)	- 47	- 2.5%	- 5.8%
Population density	14.7	-	40.0
Sex			
Males	894	48.0%	48.9%
Females	970	52.0%	51.1%
Age			
Aged 0 to 4	51	2.7%	3.8%
Aged 5 to 19	323	17.3%	16.1%
Aged 20 to 29	180	9.7%	14.0%
Aged 30 to 44	284	15.2%	13.8%
Aged 45 to 59	429	23.0%	19.3%
Aged 60 to 64	149	8.0%	7.2%
Aged 65 to 74	238	12.8%	13.9%
Aged 75 and over	211	11.3%	11.8%
Country of birth			
Born in UK	1,781	95.6%	92.9%
Born outside of UK	81	4.4%	7.1%
National Identity			
One or more UK identity	1,756	94.3%	93.4%
UK identity and non-UK identity	39	2.1%	1.7%
Non-UK identity	67	3.6%	4.9%
Religion			
Christian	796	42.7%	46.7%
No religion	892	47.9%	43.0%
Other religion	31	1.7%	2.6%

Housing & Household Composition:

	LSOA		Ceredigion
	No	%	%
Tenure			
Owned	637	79.8%	68.6%
Private rented	115	14.4%	20.6%
Social rented	46	5.8%	10.5%
Shared ownership	0	0.0%	0.3%
Lives rent free	0	0.0%	0.0%
Accommodation Type			
Detached	436	54.7%	50.7%
Semi detached	159	19.9%	23.1%
Terraced	175	22.0%	14.1%
Flat, maisonette or apartment	23	2.9%	11.3%
Caravan or other mobile temporary	4	0.5%	0.8%
Household composition			
One person household	212	26.6%	33.0%
Single family household	544	68.2%	60.4%
Other household types	42	5.3%	6.6%
Central Heating			
No central heating	39	4.9%	2.6%
Occupancy Rating			
Overcrowded households	14	1.8%	1.4%
Number of bedrooms			
1 bedroom	30	3.8%	7.4%
2 bedrooms	183	22.9%	23.6%
3 bedrooms	330	41.4%	42.5%
4+ bedrooms	255	32.0%	26.5%
Number of cars or vans			
No car or van	66	8.3%	15.7%
Deprivation			
Households deprived in one or more deprivation dimensions	402	50.4%	52.9%

Labour Market & Education:

	LSOA		Ceredigion
	No	%	%
Economic activity status			
Economically active (in employment)	905	57.7%	46.8%
Economically active (unemployed)	27	1.7%	1.8%
Economically inactive	617	39.3%	47.9%
Retired	397	25.3%	27.7%
Student	68	4.3%	10.0%
Looking after home or family	53	3.4%	3.5%
Long-term sick or disabled	64	4.1%	4.4%
Top 3 Industries			
Public administration, education and health	359	38.9%	35.1%
Distribution, hotels and restaurants	154	16.7%	21.8%
Financial, real estate, professional and administrative activities	100	10.8%	10.5%
Education			
No Qualifications (all aged 16+)	192	12.2%	14.7%
Qualifications Level 2	200	12.7%	13.7%
Apprenticeship	86	5.5%	5.4%
Travel to Work			
Work mainly at/from home	380	41.3%	31.6%
Driving car/van	449	48.8%	51.1%
Bus	13	1.4%	1.3%
On foot	32	3.5%	10.0%