

## Welcome

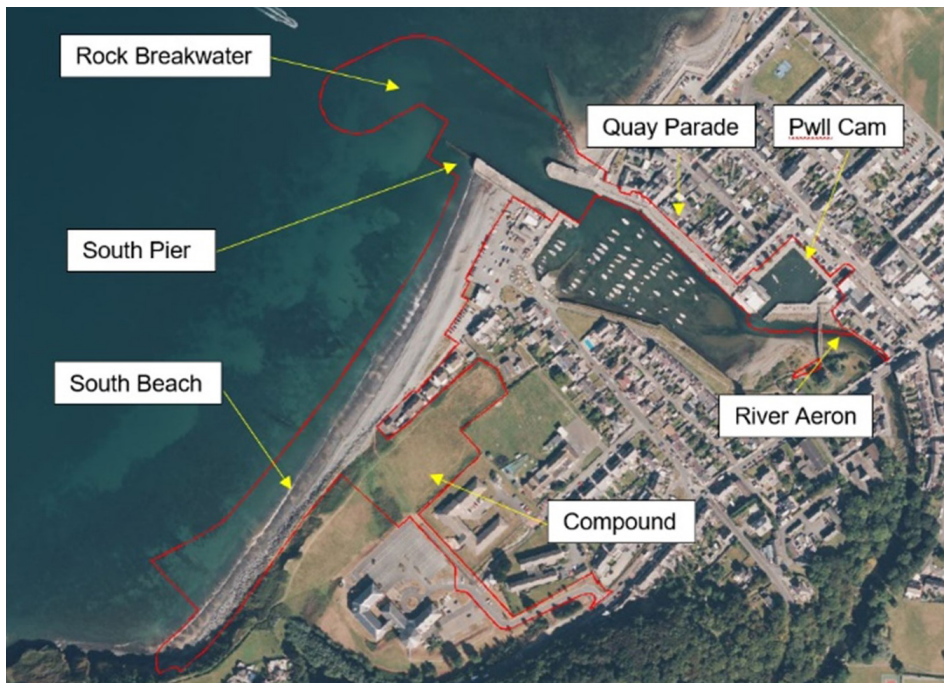


This is our first newsletter for the upcoming Aberaeron Coastal Defence Scheme which aims to provide an introduction to BAM Nuttall Limited, the project and an overview of the upcoming works.



BAM Nuttall will be working in partnership with Ceredigion County Council and AtkinsRéalis Design Consultancy to deliver Aberaeron Coastal Defence Scheme.

## Project overview



### 1. South Pier

Partial reconstruction of the seaward head of the South Pier and improving the durability of the remaining structure by grouting.

### 2. North Pier Breakwater

Construction of a rock breakwater extending out from the North Pier.

### 3. Pwll Cam Gate

Construction of a flood gate and control kiosk at Pwll Cam to maintain use of the inner harbour area.

### 4. South Beach

Improvements to South Beach in the form of removal and replacement of the existing timber groynes. Replacing and extending the existing rock revetment and placement of shingle nourishment.

### 5. Harbour Flood Walls

Raising parts of the set-back flood walls at Quay Parade and Pwll Cam with masonry and glass panels. Incorporating flood gates within these walls to maintain access. Improving durability of existing harbour walls by grouting. Raising the existing River Aeron wall with glass panels. Extending and constructing a new wall between the footbridge up towards the A487.



## Meet the Contractor



Our project team hosted a meet the contractor event on 14th and 15th November at the Aberaeron County Hall. The event was very well attended with over 230 stakeholders attending. Representatives from BAM Nuttall answered questions and held discussions with attendees.

We wanted the local community to understand what we would be building and who they could contact should they have further questions. It was important for us that the event was held before we mobilised to site so that we can demonstrate that we want to be a good neighbour.

Thanks to everyone who came along, those who helped to make the day a success and also Ceredigion County Council for enabling our use of the building.



*Thanks to everyone who came along, those who helped to make the day a success and also Ceredigion Ray Jones, Contract Manager explaining the project to attendees (above) and John Cheval, BAM Planner explaining the project to attendees (below).*



## Site office location



Our main compound and site office is located adjacent to the car park at Penmorfa. Access to the office is only via the car park at Penmorfa.



## Traffic management

We are making every effort to minimise our impact on residents and visitors to Aberaeron while we work on the flood defences. However, there is a need to manage traffic and pedestrians to allow us safe working areas and protect the public from harm.

The following restrictions will be in place:

- » **From December 2023** a temporary closure of the coastal path at South Beach. A temporary diversion route has been established via Wellington Gardens and Wellington Street
- » **From mid January 2024** a temporary lane / road closure along Quay Parade will be established only allowing access to properties
- » **From late January 2024** the footbridge over the River Aeron will be temporarily closed with a short diversion via the A487 Bridge Street.



## What have we been doing?



- » We have been investigating existing services
- » Preparing the formation and installing our temporary offices at Penmorfa
- » Meet the contractor event and establishing relationships with key stakeholders
- » Placing orders with suppliers for key materials and equipment
- » Completing consent and permit applications.

## Key upcoming works



### January:

- » Complete temporary site offices and compound at Penmorfa
- » Commence deliveries of rock up to 3.0 tonne from local quarries by land
- » Removal of street furniture Quay Parade and inner harbour terrace walls
- » Construct temporary flood defence at Quay Parade and Pwll Cam.

### February:

- » Removal of existing timber groynes south beach
- » Drilling and grouting to stabilise existing walls at Quay Parade and South Pier
- » Prepare for and commence piling works to River Aeron and South Pier
- » Delivery of (large) excavators and trucks, prior to commencing beach preparation for breakwater construction
- » Start excavating and building of Quay Parade and Pwll Cam flood defence walls.

### March:

- » Deliveries of 3.0 plus tonne rock by sea commence
- » Demolition commences at South Pier
- » Start works to construct rock breakwater at North Pier.





# Construction gallery



Pre-start visit for our Delivery Team



Preparing formation of site compound



Preparing temporary office foundations



Temporary office installation at Penmorfa



Temporary surfacing of site compound



Rock selection at Hanson Ystrad Meurig Quarry



## OUR TEAM



### Contracts Manager

Ray Jones

### Project Manager

Andrew Pointon-Bell

### Quantity Surveyor

Abby Davies

### Works Manager

Keith Hughes

### General Foreman

Damion Hopkins

### Site Agent

Emyr Thomas

### Public Liaison Officer

Gwen Clements

### Environmental Advisor

John Clancy

## OUR PARTNERS

### Ceredigion County

#### Council:

### Project Manager

Alan Haird

### AtkinsRéalis Design

#### Consultancy:

### Project Manager

Steffan Davies

### Design Manager

Matthew Tierney

## About BAM



BAM Nuttall Limited is one of the UK's largest construction services organisations. BAM operates from regional offices covering England, Scotland and Wales, and is active in construction, services engineering, design, facilities management, property development, and plant hire.

## Environment and community



Through the adoption of a responsible and proactive attitude to environmental issues BAM is committed to minimising any potentially harmful effects of its business activities on the environment and contributing to sustainable development through balancing its business aims with environmental considerations. BAM will comply with, and where possible, exceed legal and other requirements to which it subscribes, in relation to its environmental aspects and engaging communities in the project.

## Considerate Constructors



All BAM sites register with the Considerate Constructors Scheme. This means we are committed to being a good neighbour and to being clean, respectful, safe, environmentally conscious, responsible, and accountable. Our site is independently inspected to make sure we live up to these aims.

We try to work in a way that causes as little inconvenience as possible to our neighbours. We apologise for any unavoidable nuisance that may be caused during the work.

## Contact Us

It is our intention to complete these works with minimal disruption. However, if you have any concerns, please contact our Public Liaison Officer who is available to assist.

### Gwen Clements:



07585 633799



Aberaeron.plo@bam.com

You can sign up for email updates by emailing aberaeron.plo@bam.com and confirming that you would like to receive updates and a copy of future Newsletters.

For more information about BAM Nuttall Limited:

Scan here

