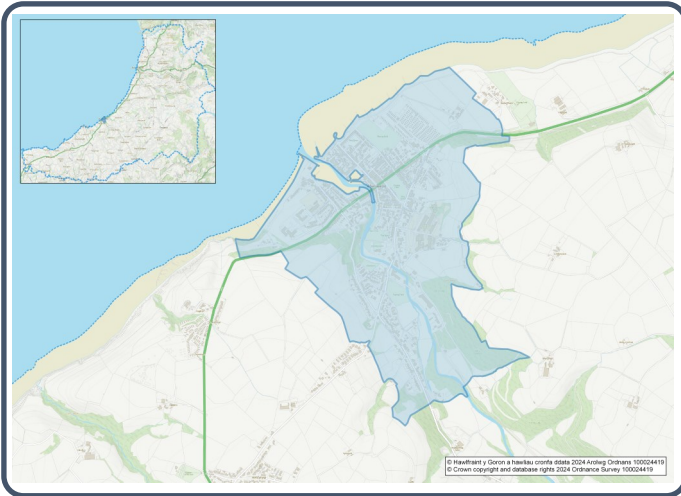


2021 Census Area Profiles – Lower Super Output Area (LSOA) W01000506 - Aberaeron



Population:



1,268 residents



Females

668



Males

600

Population Change (2011-2021)

▼ -10.8%

50 Students

(people over 16 who are engaged in full-time courses of study in secondary, tertiary or higher education institutions)

11.0% aged 0 - 14

51.4% aged 15 - 64

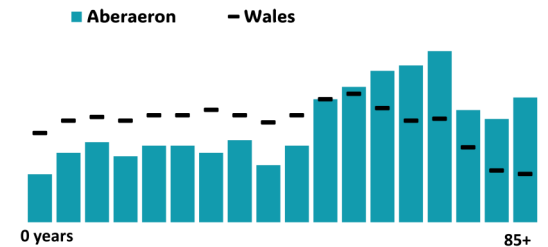
37.6% aged 65+

0.7% BAME

99.1% White

0.2% Other Ethnic Group

Age profile



Health & Disability:



23.6%

Disabled under the Equality Act



10.3%

Day-to-day activities limited a lot



78.0%

In good or very good health



9.1%

Provides unpaid care

Households:



661

Households



1.4%

Households without central heating



53.2%

Households deprived in one or more deprivation dimensions



0.6% Overcrowded Households

Welsh Language:



59.0%

Can speak Welsh

Age breakdown of Welsh speakers

0-15: 9.0%

16-64: 28.0%

65+: 21.1%



30.0%

Have NO skills in Welsh

Economy:



41.8%

Employment Rate



16.0%

Achieving level 2 qualification



56.6%

Economic Inactivity



18.1%

No Qualifications

Demography, Ethnicity, Identity & Religion:

	LSOA		Ceredigion
	No.	%	%
Population			
Population 2021	1,268	-	71,475
Population 2011	1,422	-	75,922
<i>Population change (2011-21)</i>	- 154	- 10.8%	- 5.8%
Population density	801.5	-	40.0
Sex			
Males	600	47.3%	48.9%
Females	668	52.7%	51.1%
Age			
Aged 0 to 4	34	2.7%	3.8%
Aged 5 to 19	153	12.1%	16.1%
Aged 20 to 29	110	8.7%	14.0%
Aged 30 to 44	149	11.7%	13.8%
Aged 45 to 59	238	18.8%	19.3%
Aged 60 to 64	108	8.5%	7.2%
Aged 65 to 74	234	18.4%	13.9%
Aged 75 and over	243	19.1%	11.8%
Country of birth			
Born in UK	1,218	96.1%	92.9%
Born outside of UK	50	3.9%	7.1%
National Identity			
One or more UK identity	1,202	94.8%	93.4%
UK identity and non-UK identity	22	1.7%	1.7%
Non-UK identity	44	3.5%	4.9%
Religion			
Christian	708	55.9%	46.7%
No religion	443	35.0%	43.0%
Other religion	15	1.2%	2.6%

Housing & Household Composition:

	LSOA		Ceredigion
	No	%	%
Tenure			
Owned	428	64.5%	68.6%
Private rented	144	21.7%	20.6%
Social rented	89	13.4%	10.5%
Shared ownership	3	0.5%	0.3%
Lives rent free	0	0.0%	0.0%
Accommodation Type			
Detached	184	27.8%	50.7%
Semi detached	117	17.6%	23.1%
Terraced	225	33.9%	14.1%
Flat, maisonette or apartment	136	20.5%	11.3%
Caravan or other mobile temporary	1	0.2%	0.8%
Household composition			
One person household	293	44.5%	33.0%
Single family household	346	52.5%	60.4%
Other household types	20	3.0%	6.6%
Central Heating			
No central heating	9	1.4%	2.6%
Occupancy Rating			
Overcrowded households	4	0.6%	1.4%
Number of bedrooms			
1 bedroom	89	13.5%	7.4%
2 bedrooms	128	19.4%	23.6%
3 bedrooms	287	43.6%	42.5%
4+ bedrooms	155	23.5%	26.5%
Number of cars or vans			
No car or van	163	24.7%	15.7%
Deprivation			
Households deprived in one or more deprivation dimensions	353	53.2%	52.9%

Labour Market & Education:

	LSOA		Ceredigion
	No	%	%
Economic activity status			
Economically active (in employment)	453	40.6%	46.8%
Economically active (unemployed)	13	1.2%	1.8%
Economically inactive	631	56.6%	47.9%
<i>Retired</i>	474	42.5%	27.7%
<i>Student</i>	34	3.0%	10.0%
<i>Looking after home or family</i>	38	3.4%	3.5%
<i>Long-term sick or disabled</i>	50	4.5%	4.4%
Top 3 Industries			
Public administration, education and health	180	38.1%	35.1%
Distribution, hotels and restaurants	114	24.2%	21.8%
Financial, real estate, professional and administrative activities	50	10.6%	10.5%
Education			
No Qualifications (all aged 16+)	202	18.1%	14.7%
Qualifications Level 2+	178	16.0%	13.7%
Apprenticeship	61	5.5%	5.4%
Travel to Work			
Work mainly at/from home	118	25.4%	31.6%
Driving car/van	234	50.4%	51.1%
Bus	16	3.4%	1.3%
On foot	72	15.5%	10.0%