

# CYNGOR SIR CEREDIGION COUNTY COUNCIL

**Report to:** Cabinet

**Date of meeting:** 01/10/2024

**Title:** Decision on Aberaeron Library Relocation

**Purpose of the report:** To Seek approval to move Aberaeron Library into The County Offices at Penmorfa.

**For:** Decision

**Cabinet Portfolio and Cabinet Member:**

**Councillor Catrin M S Davies, Cabinet Member for Culture, Leisure and Customer Services**

## **Introduction**

Aberaeron Library is one of four full time town libraries (Aberaeron, Lampeter, Aberystwyth and Aberteifi).

Figures for March show it has 2306 members of which 506 have used the library building in the past 12 months (active users). 2451 loans were made during the month of July which is the 2<sup>nd</sup> highest figure since April 2022.

The library users in Aberaeron are roughly broken down into 25% children under 16, 50% Adults, and 25% aged 65+.

Aberaeron's current usage is low, accounting for approximately 10% of all active library users and 10% of loans across the county.

Use of e-resources, such as eBooks, magazines and newspapers continue to grow and have daily use of 800+ users county wide.

Customer contact visits (i.e. non-library related visits) are generally in single digits per day but remains a vital service for those unable to work digitally.

In 2023 the library service developed grant proposals which could improve the sustainability of the library service which must run on a very limited budget and faces continuing inflationary pressure.

With the backdrop of unused building space, reception and customer service duplication in Penmorfa and significantly lower use than other libraries, a grant proposal was created to redevelop a new library to be based in Penmorfa to modernise library provision and to achieve the following strategic goals.

- Ensuring the service can increase future usage through improved children's facilities and support for community workshops, maker space and a larger collection of books and dedicated working spaces.
- Ensuring library provision in Ceredigion can better meet the Welsh library standards. Particularly focusing on the wider remits of training, developing skills, digital literacy, supporting eGovernment as well as local and national government agendas.

- Ensuring the service is environmentally sustainable and to reduce CO2 impact. This includes heating, lighting but also supporting library fleet vehicles and delivery services to migrate to electric vehicles over time.
- Ensuring the service is financially sustainable and reduce overhead costs in running the service.
- Improve the integration of the service with the through Age Wellbeing (TAW) objectives to better support citizens and signpost to early intervention and support.
- Ensuring the service can better collaborate and reduce duplication across the organisation reducing costs and improving customer support.

This work was formalised into a successful grant proposal with Welsh Government funding the creation of a new library at a cost of £268,000.

The grant and relocation of the library would be measured as successful on the following criteria

- To increase children's issues by 20% from 4079 to over 5000 in the first year after completion of the project.
- To increase our visitor figures by 20% from 6670 to over 7900 in the first year after completion of the project.
- Increase loans from health and wellbeing collection "Reading Well" by 20% in the first year after completion.
- Reduce Library carbon footprint compared to previous year by more than 4000 kg/CO<sub>2</sub>.

After submitting this grant, the council faced further financial challenges requiring further budget saving proposals, several of which targeted library services to achieve a total saving of £187k per annum. One proposal (£70k) agreed required that we:

*Retain a presence in each of the 4 current towns but co-locate library provision with other Council Services where-ever possible, combined with reviewing every location's opening hours.*

These budget savings relate to all 4 main libraries (Aberaeron, Aberystwyth, Lampeter and Aberteifi) and looked to improve collaboration across services to reduce duplication and costs.

The savings target of £70k was not directed at any site, but also left the challenge to review opening hours which would be the fallback should savings not be met. This savings target has been applied to the libraries budget from the 1<sup>st</sup> of April 2024 and were considered by the Corporate Resources Overview and Scrutiny Committee and Cabinet in February/March 2024 as part of the budget setting process. The saving has already been taken from the Library Service budget, therefore, it is for the library service to now implement and reduce costs in year to remain within the reduced allocated budget.

## County Hall building and reuse

The Town Hall was originally built in 1846 to accommodate the Court of Quarter Sessions. It had an arcaded market hall on the ground floor and a council chamber or courthouse above. It became a County Hall from 1888 and was further extended in 1934-6 and 1948. A return range was added along Victoria Street and the large rear block was added after 1981 to a design prepared in 1958.

Over the years it has accommodated many council services. Today all that remains is the registrar's district office, which will be relocated to Penmorfa shortly and the Mid Wales Transport agency which the estates team are discussing viable options for re-location.

Historic storage, and paper records are being relocated to modern records as the building is cleared. By the end of this financial year it is expected that the library customer services desk will be the sole remaining occupant, utilising the shaded area of the ground floor in the plan below.

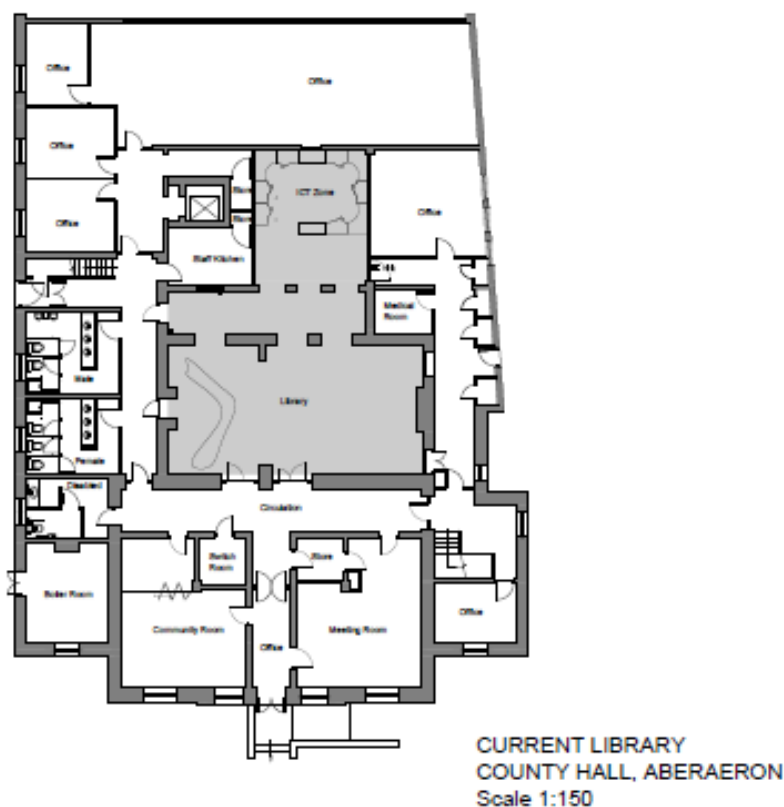


Figure 1 County hall, Ground floor (Library area is shaded)

The building fabric does not meet modern standards for efficiency and is mainly heated via oil central heating. It is not possible to run a financially viable library service from such a large building with some of the significant costs (23/24) listed below.

Maintenance -	£6,965
Electricity -	£13,782
Fuel Oil -	£2,599
Rates -	£21,266
Internet -	£418
<b>Total</b>	<b>£44,760</b>

The building is in a prime location and will be suitable for sympathetic redevelopment to improve its efficiency and layout to allow business and/or commercial accommodation which can replace footfall and provide employment opportunities. Investigations into future development options and funding opportunities are underway by the economic development team. However, redevelopment work cannot happen whilst the building is in part use.

### **Consultation and Impact on citizens**

The proposal and public consultation provoked a strong response from the public with over 896 responses and we are grateful to everyone who has taken the time to respond. A full report can be found in Appendix 1

Many hundreds of comments have been received and these have highlighted the following key concerns:

- The loss of footfall for local businesses.
- The increased walking distance making it unusable for those with physical limitations.
- Users wanting to shop and socialise in the town centre at the same time as visiting the library.

Most responses focused on the needs of the elderly only. Whilst it is true that an elderly or user with restricted mobility living in the centre of Aberaeron might find the walk to Penmorfa challenging, it is only 650m from Market Street which compares similarly with Tanyfron primary care being 600m from the same location.

There will be other elderly library members living in surrounding villages for example who may find the parking and access via car more suitable in Penmorfa .

### **Conclusion**

We request cabinets support of the proposed relocation of the library into Penmorfa which will:

- Deliver a new dedicated children's area with an increased collection and improved opportunities to link with the primary school and the shared car parking to introduce a new generation to library benefits and lifelong learning.
- Increase in opening hours where library will be available to the public.
- Reduce CO2 footprint by moving to renewable energy sources, allowing the library community van to operate from the site, possibly as an electric vehicle (grant dependant) with increased hours to better support the community.
- Reduce duplication in customer service staff across the two buildings reducing costs and ensuring that the library hours are not significantly reduced.
- Coordinate Customer Contact in one location to reduce confusion.
- Improve collaboration and signposting between customer contact and library staff with the new independent living centre creating opportunities to better support independent living.
- Provide increased and improved equipment and facilities to better help support individuals with their personal development.
- Allow work and study opportunities currently not possible.

- Free up a historic town centre building to redevelop and provide new business premises at the heart of the town which potentially can generate greater footfall and economic benefits.

Or request that

- Cabinet to instruct officers to proceed with the closure of the library service at either Aberaeron or Lampeter in order to achieve the £70k savings required from the library service to achieve the corporate £5.8M savings target for 2024/25.

Whilst the library service would like to maintain a large library in the centre of each of our towns this is not financially viable. We face significant challenges to maintain any service and without a concerted effort to develop a more resilient service, the quality of future library provision is put further at risk.

Should neither option be agreed we would need to make a significant reduction in opening hours which would further undermine the financial resilience and effectiveness of the library service.

**Wellbeing of Future Generations:**

**Has an Integrated Impact Assessment been completed? If not, please state why.**

Yes – prior to consultation.

**Summary of Integrated Impact Assessment:**

- Long term:** Looking at the long-term sustainability of existing facilities and ensuring we full utilise modern sustainable spaces.
- Collaboration:** Linking with wider council services to support a one stop shop and better signposting for support services.
- Involvement:** Consultation has been carried out with the community over the use of council buildings which highlighted the issues with parking to access town centre buildings but no direct consultation with the community on this proposal yet.
- Prevention:** N/A
- Integration:** The proposal supports these pillars and introduces no known negative impacts.

**Recommendation(s):**

- 1. Cabinet to approve the relocation of Aberaeron library to Penmorfa.**
- 2. If not approved, Cabinet are requested to identify the preferred alternative option listed above necessary to achieve the £70k recurring savings from the library service.**

**Reasons for decision:**

**To ensure budget savings are met and that an improved library service is sustainably delivered for the Aberaeron area.**

**Overview and Scrutiny:**

Consultation report considered at Corporate Resources scrutiny.

**Policy Framework:**

**Corporate Well-being Objectives:**

Libraries support corporate well-being and corporate strategy objectives through

- Supporting education and literacy
- Building stronger communities
- Enhancing Digital Literacy
- Promoting Health and Wellbeing

**Finance and Procurement implications:**

Grant funding is secured to carry out relocation and development of new library.

**Legal Implications:**

The Public Libraries and Museums Act 1964

**Staffing implications:**

Some roles may be altered, staff redeployed.

**Property / asset implications:**

This proposal vacates county hall, Aberaeron for future uses, leading to wider immediate savings. Reuse options to be the subject of a future report.

**Risk(s):**

Failure to deliver services within budget

**Statutory Powers:**

**Background Papers:**

Joint Report of the Leader, Cabinet Member - Finance & Procurement, the Chief Executive and the CLO - Finance & Procurement upon the 24/25 Budget, including the Capital Strategy, the Multi-year Capital Programme and Prudential Indicators for Capital and Treasury Management.

[report - budget report 2024-25.pdf \(ceredigion.gov.uk\)](https://www.ceredigion.gov.uk/reports-and-accounts/budget-reports/budget-report-2024-25.pdf)

**Appendices:**

Appendix 1: Consultation Response

Appendix 2: Integrated Impact Assessment

**Corporate Lead Officer:**

Alan Morris, Corporate Lead Officer, Customer Contact, ICT & Digital

**Reporting Officer:**

Alan Morris, Corporate Lead Officer, Customer Contact, ICT & Digital

**Date:**

11/09/2024



Cyngor Sir  
**CEREDIGION**  
County Council

# Aberaeron Library relocation Consultation Key findings and response



## Background

Between 23<sup>rd</sup> of May and 9<sup>th</sup> of July 2024, Ceredigion County Council consulted with residents on proposals for Aberaeron Library.

To meet ongoing budget pressures and provide more efficient services to our citizens, the Council is currently undertaking a review into the use of its buildings. As part of this process the council was exploring the use of County Hall in Aberaeron, which offers a Library Service and a Face-to-Face Customer Service, offering advice and assistance to the public.

The aim of the relocation project is to utilise available grant funding to expand the library, offering new facilities in a new dedicated space in Penmorfa. This would be more efficient to run and secure a long-term sustainable service. The vacated space would then be available for commercial reuse with additional income generation. These changes would result in significant savings, achieved through staffing efficiencies and reduced running costs whilst also achieving increased income from reuse of the vacated space.

Aberaeron library delivers services to both the town of Aberaeron and the surrounding rural areas. In contrast to the facilities available at County Hall, Penmorfa would offer onsite parking (including disabled parking spaces near the door), as well as its proximity to a bus stop, safe walking routes into the town, Aberaeron Primary School and Min y Mor Residential Care Home. The community mobile library van will also be able to operate from the new site.

Re-locating to Penmorfa would also provide a larger space for a children's book collection along with additional space to support workers and learners including a dedicated work room. The proposal would modernise library provision with the inclusion of a Maker Space. This is a dedicated area where library users can get creative and use shared resources such as an advanced sewing machine, 3D printer, Internet of Things sensors and other creative opportunities, a space which could also be utilised for training and group workshops. In total there is the potential opportunity to secure capital investment in a new improved and enlarged facility of at least £250,000.

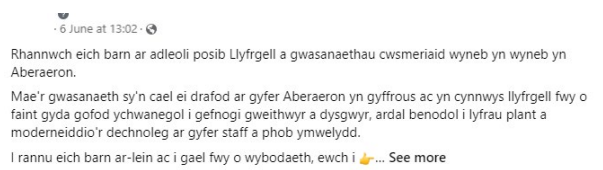
The proposal would be able to offer an improved library and customer service along with access to the new Centre for Independent Living. The Penmorfa Centre for Independent Living promotes independence and community support and is set to transform the way individuals find solutions and access information to help themselves. The centre provides the opportunity to see a range of solutions related to Care, Technology, Mobility and Independent Livings. The centre is committed to suggesting practical solutions to all age groups. This would offer individuals a host of services in one place and promote our aim to provide a collaborative service to the public.

The proposal would also address sustainability considerations and our Net Zero ambitions through the reduction of the carbon footprint of the library service, taking advantage of existing renewable energy and efficiencies through co-locating services.



The survey was available as an online survey and in traditional print format. Paper copies were available in libraries, customer service desks and via request from CLIC. Respondents could also provide their answers over the phone on request.

A Communications Plan was implemented and involved a press release at launch along with media posts on Twitter, Facebook and Instagram posted by the Communications Team. A display was also placed in the foyer of Aberaeron library to help advertise the consultation. A sample of these promotional materials is shown below.



## Response Rate

There was a total of 896 responses to the consultation of these 269 paper forms submitted.

11% or 102 surveys were completed in Welsh and 89% or 794 in English. On average, respondents took 6 mins 23 seconds to complete the online survey although this included the many hundreds manually typed in by customer service staff.

Many of the responses were collected and submitted by a group of local people opposed to the proposal which did encourage participation.



**896**

Responses received.



**45%**

Responses were not existing Library users.

**80%**

Disagree that relocating would lead to efficiencies.



**84%**

Disagreed that the move would improve customer service.

**88%**

Felt it would not encourage additional library users.

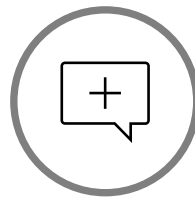


**79%**

Believed re-locating services into an efficient building would not reduce carbon emissions.

**91%**

Do not support relocating the library.



**664**

Comments received on the proposals.



The library has 2306 members of which 506 have used the facility in the last 6 months and are considered active users. 2451 loans were made during the month of July and Aberaeron library accounts for approximately 10% of all active library users and 10% of library loans.

Many comments showed a misconception that library users were mainly elderly. The library statistical returns show that the library users in Aberaeron are roughly broken down into 25% children under the age of 16, 50% Adults between 16 and 65, with the remaining 25% aged 65+. It was also apparent many responses were negative to all questions, despite strong evidence on efficiencies being achievable. This would suggest many felt it to be a referendum on the facility remaining in County Hall rather than a considered response.

The consultation respondent age breakdown is below.

0-15	4
16-25	9
25-44	144
45-64	264
65+	367
Prefer not to say	73

Respondents were also asked if they had a long term physical or mental health condition or illness that reduces your ability to carry out day-to-day activities?

Yes, my day-to-day activities are limited a lot	83
Yes, my day-to-day activities are limited a little	102
No	501
Prefer not to say	119

## Comments

Respondents were asked to provide further comments. 664 responses were collected and covered many topics and concerns.

There were 20 positive comments generally wanting improved library services and supportive of the proposal. Several also welcoming the ability to park.

There were 6 general comments with 1 suggesting supportive and 5 suggesting unsupportive views.

Amongst the 638 unsupportive comments there was a very broad range of reasons provided broadly separated into the themes below.

Theme	No of comments
Town Centre is more convenient. Many comments supporting multiple visits in town, café, shopping etc. and generally easier access.	243

Moving the library to Penmorfa creates difficulties for residents with mobility problems and is too far to walk. Includes further comments linked to bus travel	137
Range of general concerns – Carbon reduction issues, Lampeter Library, Mobile to village, passing footfall, parking issues in Penmorfa, longer opening, general disagreement etc.	89
Support Local Businesses, footfall needs to be in town centre.	41
Relocate services from Penmorfa to County Hall and develop “community Hub”	33
Lack of Trust in the council, predetermined decision, trying to close services, hidden agendas etc	33
Waste of Money	26
What happens to County Hall? Comments suggesting concern with the future use of county hall and town centre decay.	19
Staff should stop working from home and return to work in offices	17

Respondents were further asked if the proposal goes ahead would there be any additional services or resources they would like to see offered.

Of the 378 comments made, 75 of these gave a suggestion and fell into the themes below.

Theme	No of comments
Educational classes	10
Children’s activities / play area / Mother and baby sessions	8
Café and hot drinks	8
Advice and support	6
Increased ICT facilities	5
Room to book for meetings	5
Tourist Information centre	4
Social Activities	3
Greater book collection	3
Banking facilities	2
Access to councillors	2
Road crossing to Penmorfa	2
Library of things (loan tools) / Repair Centre / Crafts area	2
Food bank	1
Mobile library in surrounding area	1
Newspapers	1
Parent and Child parking	1
Quiet reading area	1
Book delivery service	1
Place to work	1
Youth support	1

## Response to key points

The proposal has faced a strong local response with a coordinated response being led by concerned citizens. The overwhelming response has been negative.

### 1. Town centre is more convenient and moving the library Penmorfa creates difficulties for residents with mobility problems and is too Far to walk.

This is understood and many users will “pop in” to the library as part of their day-to-day activities in town. However, Ceredigion has significant underutilised building space and must limit costs by rationalising buildings used and reduce the locations we operate public facing services from to reduce duplication.

The walk to Penmorfa is a 650m walk from the centre of town. The Tanyfron integrated health centre is 600m from the same point. It is accepted that this is less convenient but compared to a larger residential population, for example Aberystwyth, it is close to many residents. Being very close to the primary school, many families already make this walk daily, as do council staff both to attend work and for lunch visits into town.

The library, in many comments has been referred to as the towns library but it must be recognised that the library provides services to the wider community for villages from Talgarreg to Llannon.

There is duplication of activities in Penmorfa and County Hall offering customer service, signposting and reception duties across two locations. The council must also maintain staff cover for holidays or sickness in these roles. With reduced staffing, services cannot always be maintained. IT staff, cleaning and caretaker staff are also affected meaning efficiencies are wider than just the visible staff.

### 2. General Concerns

A whole range of concerns have been raised. Many have suggested that the library will lose footfall and passing trade. The library does not look for passing trade, users are registered members and whilst our libraries will welcome any new members, tourists are not our clientele. Local residents will be aware of the location and many will have worked or attended the Penmorfa for council business or used it for free parking when visiting town.

Many other comments reference the Tourist Information centre, this has been closed and is not based in County hall or part of this consultation.

Many comments also wanted more information on library usage. Aberaeron library has the lowest footfall and lowest usage of the 4 main Ceredigion libraries with around 500 active users in a month and has single digit customer enquiries on a daily basis. The library will issue around 2100 loans a month, compared to a total loan across all libraries of 21000

More users are also turning to digital issues which can be accessed from home through apps such as Borrowbox with over 9500 issues per month across the county.

Several respondents are also concerned that the library toilets are clean and they would lose this facility in town. Unfortunately maintaining County Hall for additional toilets is not viable and public toilets are available close by.

Many further concerns were raised regarding the closure of other facilities such as the hospital and movement of the police station, but these are not in the council's control.

### **3. Support Local Businesses, footfall needs to be in town centre**

With a low number of visitors (500 per month) it is unlikely that the libraries position is key to local business success. Aberaeron is a very busy town centre, particularly in warmer months. The ongoing harbour developments will further improve the town centre and this proposal does expect the County Hall building to be redeveloped for continued commercial use and not sold as many comments assume. Proposals on future reuse do not sit in the remit of this proposal but will be developed and explored in detail to ensure future reuse supports the towns economy. It is expected these new commercial opportunities would deliver a greater footfall and further enhance the town centres commercial viability.

In conclusion, council voted on budget decisions meaning that the library service must accommodate budget savings of £186,000. These have already been applied to the library service budget which requires a reduced fleet, reduced opening hours as well as changes to facilities.

With costs increasing and budgets decreasing this proposal seeks to maintain a financially viable service and protect quality library provision in the long term.

For those housebound or genuinely unable to visit a library, a home delivery service can be arranged. This applies across the county through our mobile library provision.





## INTEGRATED IMPACT ASSESSMENT (IIA) TOOL

This IIA tool is designed to help your decision making and ensure that your proposal:

- is aligned to the Council's Corporate Well-being Objectives
- complies with the Equality Act 2010, including our socio-economic duty.
- complies with the Welsh Language Measure 2011 (Welsh Language requirements)
- contributes to the National Well-being goals of the Well-being of Future Generations (Wales) Act 2015 and incorporates the principles of Sustainable Development
- considers risk management.

Throughout the document there are information pop ups. You can hover over these for hints and tips. They look like this - [HINT](#)

There are also web links to data sources of [evidence](#) that could help inform your thinking and the judgement you are making. To view this information press **ctrl** on your keyboard and click on the link.

Equality and Inclusion officers read through every IIA and provide feedback to the author via Corporate Lead Officers. IIA that are submitted to Cabinet are published on the Council's website so that the public can see them.

This IIA tool is categorised into the 7 National Well-being Goals for Wales:

1. **A prosperous Wales** – where everyone has jobs and there is no poverty.
2. **A resilient Wales** – where we're prepared for things like floods.
3. **A healthier Wales** – where everyone is healthier and can see the doctor when they need to.
4. **A more equal Wales** – where everyone has an equal chance whatever their background.
5. **A Wales of cohesive communities** – where communities can live happily together.
6. **A Wales of vibrant culture and thriving Welsh language** – where we have lots of opportunities to do different things and where lots of people can speak Welsh.
7. **A globally responsible Wales** – where we look after the environment and think about other people around the world.



# DO I NEED TO ASSESS IMPACT?

Does your proposal:

- introduce a new service or add to an existing service that will affect service users?
- remove, reduce, or alter a service that will affect service users?
- introduce a new policy, strategy, or plan that will affect Ceredigion residents?
- introduce significant changes to an existing policy, strategy, or plan that will affect Ceredigion residents?
- change staffing structures so much that employees or services users may be affected?

## YES

An IIA is required if your answer is yes to **any** of these questions.

## NO

An IIA is not required if your answer is no to **all** these questions

Complete the template below.

Please remember to include your reason for not carrying out an IIA on the Cabinet Report template.

## Proposal Details

<b>Title of Policy / Proposal / Initiative</b>	
Relocation of Aberaeron Library	
<b>Service Area</b>	<b>Officer completing IIA</b>
Customer Contact, ICT and Digital	Alan Morris
<b>Corporate Lead Officer</b>	<b>Strategic Director</b>
Alan Morris	James Starbuck
<b>Please give a brief description of the purpose of the proposal</b>	
The proposal is to relocate Aberaeron Library from County Hall to the ground floor of Penmorfa	
<b>Who will be directly affected by this proposal? <a href="#">HINT</a></b>	
Public who use Aberaeron library and its facilities Staff currently working in Penmorfa and County Hall	
<b>Have those who will be affected by the proposal had the opportunity to comment on it?</b>	
Wider council staff will have no impact. The public have had wider opportunity to comment on the future use of council buildings which has been considered as part of our buildings repurposing.	

## Version Control

The IIA should be used at the earliest stages of decision making, and then honed and refined throughout the decision-making process. It is important to keep a record of this process so that we can demonstrate how we have considered and included sustainable development, Welsh language and equality considerations wherever possible.

<b>Version Number</b>	<b>Author</b>	<b>Decision making stage</b> <a href="#">HINT</a>	<b>Date Considered</b>	<b>Description of any amendments made</b> <a href="#">HINT</a>
0.1	Alan Morris	Draft	15/01/2024	First draft
0.2	Alan Morris	Review following feedback	19/08/2024	Minor amendments

## Council Corporate Well-being Objectives

Which of the Council's Corporate Well-being Objectives does this proposal address and how? Click here to read a summary of our [Corporate Strategy 2022-27](#)

<b>Boosting the economy, supporting business, and enabling employment.</b>	The proposal frees up a town centre location to allow redevelopment opportunities to encourage businesses into the town centre.
<b>Creating caring and healthy communities</b>	The proposal allows better integration of service and encourages signposting between services.
<b>Providing the best start in life and enabling learning at all ages</b>	The proposal secures the location in close proximity of the primary school allowing greater integration with pupils and provides learning opportunities for all ages
<b>Creating sustainable, greener, and well-connected communities</b>	The proposal secures the library service in a sustainable building with the benefits of Solar PV, biomass heat network, parking and access to charging points which will support migration to EV vehicles.

## National Well-being Goal: A Prosperous Wales

**An innovative, productive, and low carbon society where everyone has decent work and there is no poverty.**

Click [here](#) for information about a prosperous Wales.

**Does the proposal contribute to this goal? Describe the positive or negative impacts. (Click [here](#) for information)**

The new facility will have additional training and learning facilities as well as a larger collection of books to help develop peoples skills and reach their potential and support employability.

A dedicated children's section so close to the primary school will encourage younger users to support their learning journey.

Dedicated work areas, and bookable study areas will help student or those without home working facilities.

This proposal provides a more environmentally sustainable building, powered with renewable onsite energy and improved efficiency to deliver library and customer contact services from. EV charging will be available as well as safe walking routes and a bus stop.

The proposal frees up a town centre location to allow redevelopment opportunities to encourage businesses into the town centre.

**What evidence do you have to support this view?**

We have evidence of energy usage over time.

Design plans

**What action(s) can you take to mitigate any negative impacts or better contribute to this National Well-being Goal?**

Not being in the centre of town some users may choose to drive

## National Well-being Goal: A Resilient Wales

**A society where biodiversity is maintained and enhanced and where ecosystems are healthy and functioning.**

Click [here](#) for information about a resilient Wales.

**Does the proposal contribute to this goal? Describe the positive or negative impacts. (Click [here](#) for information)**

N/A

**What evidence do you have to support this view?**

N/A

**What action(s) can you take to mitigate any negative impacts or better contribute to this National Well-being Goal?**

N/A

## National Well-being Goal: A Healthier Wales

**A society where people make healthy choices and enjoy good physical and mental health.**

Click [here](#) for information about a healthier Wales.

**Does the proposal contribute to this goal? Describe the positive or negative impacts. (Click [here](#) for information)**

The additional collection space and additional community and learning resources will all offer a positive impact offering more opportunities and better facilities to support mental development and resilience.

The new location will also integrate with the Assisted living facility and providing better signposting and early intervention opportunities.

No negative impact

**What evidence do you have to support this view?**

Improved library design, additional learning and working space and new maker space.

**What action(s) can you take to mitigate any negative impacts or better contribute to this National Well-being Goal?**

No negative impact.

## National Well-being Goal: A More Equal Wales

**A society where everyone has an equal chance whatever their background or circumstances.**

This section is longer because you are asked to assess the impact of your proposal on each group that is protected by the **Equality Act 2010**.

Click [here](#) for information about equality in Wales.

**Do you think this proposal will have a positive or a negative impact on people because of their age? (Click [here](#) for information)**

<b>Children and Young People up to 18</b>	Positive
---	----------

<b>People 18-50</b>	Positive
---------------------	----------

<b>Older people 50+</b>	Positive
-------------------------	----------

**Describe the positive or negative impacts.**

The library will be an improved space and collection compared with current provision and will support a wider range of services. The proximity to the primary school will open up opportunities to engage learners early.  
Access to parking for cars and cycles for visitors.  
Improved Sustainability and environmental impact.

Users with mobility issues may have challenges with the increased walking distance and some users will not find the site as convenient to attend.

**What evidence do you have to support this?**

Library design, location and feedback.

**What action(s) can you take to mitigate any negative impacts?**

**Is there an opportunity to use this proposal to eliminate unlawful discrimination, advance equality of opportunity or encourage good relations between people in this group and the rest of the population?**

Provide clear information verbally and visually to current library users about the change provide guidance on best walking route.  
Support those unable to attend any library due to severe mobility issues with digital access or in some cases with home deliveries using community library vans.  
There is potential to utilise the new library for more intergenerational projects.

**Do you think this proposal will have a positive or a negative impact on people because of their disability? (Click [here](#) for information)**

<b>Hearing Impairment</b>	None / Negligible
<b>Physical Impairment</b>	None / Negligible
<b>Visual Impairment</b>	Positive
<b>Learning Disability</b>	None / Negligible
<b>Long Standing Illness</b>	None / Negligible
<b>Mental Health</b>	None / Negligible
<b>Other</b>	None / Negligible

**Describe the positive or negative impacts.**

The building will offer an improved design with disabled parking near entrance. The interior will be better lit with more natural light and improved facilities.  
Additional collection space will allow a better range of resources and maker space will benefit all users.  
Closer integration with the independent living showroom located in the same building will allow better signposting.  
People with a disability may dislike the change to their routine if they are used to visiting the library in its current location however they will benefit from the colocation of additional services.

**What evidence do you have to support this?**

Design and site layout

**What action(s) can you to take to mitigate any negative impacts?**

**Is there an opportunity to use this proposal to eliminate unlawful discrimination, advance equality of opportunity or encourage good relations between people in this group and the rest of the population?**

Provide clear information verbally and visually to current library users about the change.

**Do you think this proposal will have a positive or a negative impact on people who are transgender? (Click [here](#) for information)**

<b>Trans Women</b>	None / Negligible
<b>Trans Men</b>	None / Negligible
<b>Non-binary people</b>	None / Negligible

**Describe the positive or negative impacts**

No specific impact to the group compared to wider benefits.

**What evidence do you have to support this?**

N/A

**What action(s) can you to take to mitigate any negative impacts?**

**Is there an opportunity to use this proposal to eliminate unlawful discrimination, advance equality of opportunity or encourage good relations between people in this group and the rest of the population?**

N/A

**Do you think this proposal will have a positive or a negative impact on people with different sexual orientation? (Click [here](#) for information)**

<b>Bisexual</b>	None / Negligible
<b>Gay Men</b>	None / Negligible

<b>Gay Women/Lesbian</b>	None / Negligible
<b>Heterosexual/Straight</b>	None / Negligible
<b>Describe the positive or negative impacts</b>	
No specific impact to the group compared to wider benefits.	
<b>What evidence do you have to support this?</b>	
N/A	
<b>What action(s) can you to take to mitigate any negative impacts?</b>	
<b>Is there an opportunity to use this proposal to eliminate unlawful discrimination, advance equality of opportunity or encourage good relations between people in this group and the rest of the population?</b>	
Non identified	

<b>Do you think this proposal will have a positive or a negative impact on people who are married or in a civil partnership? (Click <a href="#">here</a> for information)</b>	
<b>People who are married</b>	None / Negligible
<b>People in a civil partnership</b>	None / Negligible
<b>Describe the positive or negative impacts</b>	
No specific impact to the group compared to wider benefits.	
<b>What evidence do you have to support this?</b>	
N/A	
<b>What action(s) can you to take to mitigate any negative impacts?</b>	
<b>Is there an opportunity to use this proposal to eliminate unlawful discrimination, advance equality of opportunity or encourage good relations between people in this group and the rest of the population?</b>	
N/A	



**Do you think this proposal will have a positive or a negative impact on people who are pregnant or on maternity leave? (Click [here](#) for information)**

<b>Pregnancy</b>	None / Negligible
<b>Maternity</b>	None / Negligible

**Describe the positive or negative impacts**

Additional collection and children's section may better support new mothers. The increased distance from town centre may make it less convenient.

**What evidence do you have to support this?**

Design and feedback

**What action(s) can you take to mitigate any negative impacts or better contribute to positive impacts?**

Review collection of resources for this group.

**Do you think this proposal will have a positive or a negative impact on people because of their ethnic origin? (Click [here](#) for information)**

<b>Asian / Asian British</b>	None / Negligible
<b>Black / African / Caribbean / Black British</b>	None / Negligible
<b>Mixed / Multiple Ethnic Groups</b>	None / Negligible
<b>White</b>	None / Negligible
<b>Other Ethnic Groups</b>	None / Negligible

**Describe the positive or negative impacts**

No specific impact to the group compared to wider benefits.

**What evidence do you have to support this?**

N/A

**What action(s) can you take to mitigate any negative impacts?**

**Is there an opportunity to use this proposal to eliminate unlawful discrimination, advance equality of opportunity or encourage good relations between people in this group and the rest of the population?**

N/A

**Do you think this proposal will have a positive or a negative impact on people with different religions, beliefs, or non-beliefs? (Click [here](#) for information)**

<b>Buddhist</b>	None / Negligible
<b>Christian</b>	None / Negligible
<b>Hindu</b>	None / Negligible
<b>Humanist</b>	None / Negligible
<b>Jewish</b>	None / Negligible
<b>Muslim</b>	None / Negligible
<b>Sikh</b>	None / Negligible
<b>Non-belief</b>	None / Negligible
<b>Other</b>	None / Negligible

**Describe the positive or negative impacts**

No specific impact to the group compared to wider benefits.

**What evidence do you have to support this?**

None

**What action(s) can you take to mitigate any negative impacts?**

**Is there an opportunity to use this proposal to eliminate unlawful discrimination, advance equality of opportunity or encourage good relations between people in this group and the rest of the population?**

N/A

**Do you think this proposal will have a positive or a negative impact on men or women?** (Click [here](#) for information)

<b>Men</b>	None / Negligible
<b>Women</b>	None / Negligible

**Describe the positive or negative impacts**

No specific impact to the group compared to wider benefits.

**What evidence do you have to support this?**

None

**What action(s) can you to take to mitigate any negative impacts?**

**Is there an opportunity to use this proposal to eliminate unlawful discrimination, advance equality of opportunity or encourage good relations between men and women?**

N/A

**Do you think this proposal will have a positive or a negative impact on people from the Armed Forces Community?** (Click [here](#) for information)

<b>Members of the Armed Forces</b>	None / Negligible
<b>Veterans</b>	None / Negligible
<b>Spouses</b>	None / Negligible
<b>Children</b>	Positive

**Describe the positive or negative impacts**

Improved children's collection, maker space and closer integration with primary school would provide a positive impact for all children and encourage learning opportunities.

Better library facilities will support all users.

**What evidence do you have to support this?**

Library layout, location, and improved children's area

**What action(s) can you to take to mitigate any negative impacts?**

Ensure feedback from users is fed into collection resources or courses offered.

## Socio-economic Duty

Socio-economic disadvantage means living on a low income compared to others in Wales, with little or no accumulated wealth, making it more difficult to access basic goods and services.

Family background or where a person is born still affects their life. For example, a child from a wealthy family often does better at school than a child from a poor family, even if the poorer child is more naturally academic. This is sometimes called socio-economic inequality.

**Do you think this proposal will have a positive or a negative impact on people experiencing socio-economic disadvantage?**

Positive

**Describe the positive or negative impacts**

Additional workspace, improved collection space and additional resources would make this a more attractive support location and offer improved signposting and support. Opening hours will be better protected.  
Being slightly further away from the town centre may make it less convenient for some users.

**What evidence do you have to support this?**

Better integration with support services, and improved facility and resources.  
Location.

**What action(s) can you take to mitigate any negative impacts?**

**Is there an opportunity to use this proposal to eliminate unlawful discrimination, advance equality of opportunity or encourage good relations between people in this group and the rest of the population?**

Ensure communication plan highlights new location for all.

## National Well-being Goal: A Wales of Cohesive Communities

**A society with attractive, viable, safe, and well-connected communities.**

Click [here](#) for information about cohesive communities.

**Does the proposal contribute to this goal? Describe the positive or negative impacts. [HINT](#)**

The new site will be integrated with wider council facilities meaning a safer environment for staff and better opportunities to support all users. Internet connection and IT facilities will be improved.

Current library users may feel a sense of disconnect from their community if they feel that they and their views have not been taken into account..

**What evidence do you have to support this view?**

Site plan

**What action(s) can you take to mitigate any negative impacts or better contribute to the goal?**

Ensure training to staff to improve signposting opportunities

Provide clear information verbally and visually to current library users about the change and listen to their feedback.

## National Well-being Goal: A Wales of Vibrant Culture and Thriving Welsh Language

**A society that that promotes and protects culture, heritage, and the Welsh language and which encourages people to take part in the arts, sports, and recreation.**

Click [here](#) for information about culture and the Welsh language

**Does the proposal contribute to this goal? Describe the positive or negative impacts.**

The improved collection space and dedicated children's area will allow a greater number of Welsh books and resources for children. All staff are currently and will continue to be Welsh speaking and will support access to a wider range of resources both physical and digital for learning and improving the use of Welsh.

Ultimately, this proposal is structured to safeguard the long-term viability of the library in Aberaeron by making it environmentally and financially viable.

**What evidence do you have to support this view?**

Library plan and design and costs.

**What action(s) can you take to mitigate any negative impacts or better contribute to the goal?**

N/A

**With reference to the following, do you think this proposal will have a positive or negative effect on the Welsh language?**

Click [here](#) for information

**Opportunities for people to use the Welsh language**

Positive

**Treating the Welsh language, no less favourably than the English language**

Positive

**What evidence do you have to support this view?**

Welsh speaking staff and integration with wider council services offering Welsh language services as well as improved collection space and better children's collection

**What action(s) can you take to increase the positive impact or mitigate any negative impact on the Welsh language?**

Ensure staff are trained to start all conversations bilingually and wear appropriate lanyard and display the Welsh conversation badges.

## National Well-being Goal: A Globally Responsible Wales

**A society that considers how our actions might impact on other countries and people around the world.**

Click [here](#) for information about global responsibility.

**Does the proposal contribute to this goal? Describe the positive or negative impacts. [HINT](#)**

By purposely locating services in an environmentally sustainable building and making full use of the district heating and solar PV facilities we are making long term choices for sustainable service delivery. Including the move away from fossil fuels.

**What evidence do you have to support this view?**

Site environmental energy information.

**What action(s) can you take to mitigate any negative impacts or better contribute to the goal?**

Ensure new equipment and lighting is low energy and that suppliers are responsible.

## Strengthening the Proposal

If you have identified any negative impacts in the above sections, please provide details of any practical changes and actions that could help remove or reduce the negative impacts.

What will you do?	When?	Who is responsible?	Progress
Include the fact that the new location is an 8 minute walk (0.34 miles away) on the notice informing people of the relocation.	6 months before any change	Library Manager	
Provide clear information verbally and visually to current library users about the change and listen to their feedback.	March 2024	Service manager	
Explore the potential to utilise the new library for more intergenerational projects.	Early 2025	Service manager	
<b>If no action is to be taken to remove or mitigate negative impacts, please justify why. (If you have identified any unlawful discrimination then the proposal must be changed or revised.)</b>			
<b>How will you monitor the impact and effectiveness of the proposal?</b>			
Consultation, including user surveys and reviewing feedback			

## Sustainable Development Principle: 5 Ways of Working

Describe below how you have implemented the five ways of working in accordance with the sustainable development principle of the Well-being of Future Generations (Wales) Act 2015

<p><b>Long term</b> Balancing short-term needs with long-term need and planning for the future.</p> <p><u>HINT</u></p>	<p>Looking at the long term sustainability of existing facilities and ensuring we full utilise modern sustainable spaces.</p>
<p><b>Collaboration</b> Working together with other partners to deliver.</p> <p><u>HINT</u></p>	<p>Linking with wider council services to support a one stop shop and better signposting for support services.</p>
<p><b>Involvement</b> Involving those with an interest and seeking their views.</p> <p><u>HINT</u></p>	<p>Consultation has been carried out with the community over the use of council buildings which highlighted the issues with parking to access town centre buildings but no direct consultation with the community on this proposal yet.</p>
<p><b>Prevention</b> Putting resources into preventing problems occurring or getting worse.</p> <p><u>HINT</u></p>	<p>N/A</p>
<p><b>Integration</b> Considering the impact of your proposal on the four pillars of well-being (social, economic, cultural and environment) the objectives of other public bodies and across service areas in the Council.</p> <p><u>HINT</u></p>	<p>The proposal supports these pillars and introduces no known negative impacts.</p>

## Risk




Summarise the risk associated with the proposal.

	1	2	3	4	5
Impact Criteria	Very Low	Low	Medium	High	Very High



Likelihood Criteria	Unlikely to occur	Lower than average chance of occurring	Even chance of occurring	Higher than average chance of occurring	Expected to occur
<b>Risk Description</b>	<b>Impact</b>	<b>Probability</b>	<b>Score (Impact x Likelihood)</b>		
Project funding is lost due to delays	5	3	15		

Sign Off

Position	Name	Signature	Date
<b>Corporate Manager</b>	Joy Lake	Joy Lake 	17/01/2024
<b>Corporate Lead Officer</b>			19/01/2024
<b>Corporate Director</b>			25/01/2024
<b>Portfolio Holder</b>		Catrin M S Davies	29/01/2024

1

---

<sup>1</sup> Last updated 20/10/2023

# CYNGOR SIR CEREDIGION COUNTY COUNCIL

<b><u>Report to:</u></b>	<b>Cabinet</b>
<b><u>Date of meeting:</u></b>	<b>1 October 2024</b>
<b><u>Title:</u></b>	<b>Pre-decision scrutiny of Aberaeron library re-location</b>
<b><u>Purpose of the report:</u></b>	<b>To provide feedback following the special meeting of the Corporate Resources O&amp;S Committee on the 23rd of September 2024.</b>

## **Background:**

Committee Members were requested to consider a report following the public consultation held on the proposed relocation of Aberaeron Library. The consultation key findings and response were attached to the report. Councillor Catrin M S Davies, Cabinet Member presented the information.

Councillor Catrin M S Davies advised Committee Members that the proposal for relocation of the library into Penmorfa would:

1. Deliver a new dedicated children's area with an increased collection and improved opportunities to link with the primary school and the shared car parking to introduce a new generation to library benefits and lifelong learning.
2. Increase in opening hours where library will be available to the public.
3. Reduce CO2 footprint by moving to renewable energy sources, allowing the library community van to operate from the site, possibly as an electric vehicle (grant dependant) with increased hours to better support the community.
4. Reduce duplication in customer service staff across the two buildings reducing costs and ensuring that the library hours are not significantly reduced.
5. Coordinate Customer Contact in one location to reduce confusion.
6. Improve collaboration and signposting between customer contact and library staff with the new independent living centre creating opportunities to better support independent living.
7. Provide increased and improved equipment and facilities to better help support individuals with their personal development.
8. Allow work and study opportunities currently not possible.
9. Free up a historic town centre building to redevelop and provide new business premises at the heart of the town which potentially can generate greater footfall and economic benefits.

Or request that

- Cabinet to instruct officers to proceed with the closure of the library service at either Aberaeron or Lampeter to achieve the £70k savings required from the library service to achieve the corporate £5.8M savings target for 2024.

**Recommendation(s):**

Following a lengthy discussion, Committee Members agreed to recommend that Cabinet **DEFER** the decision, for the following reasons:

1. Committee Members can undertake a site visit to County Hall, Aberaeron, and then a Special Corporate Resources O&S Committee meeting can be arranged following the site meeting, prior to making a further recommendation, and,
2. that information is collated and shared with the Committee with regards to the effect of carbon footprint based on the travel of those who attend the library at County Hall, compared to Penmorfa.

**Councillor Elaine Evans**

***Chair of the Corporate Resources Overview and Scrutiny Committee***