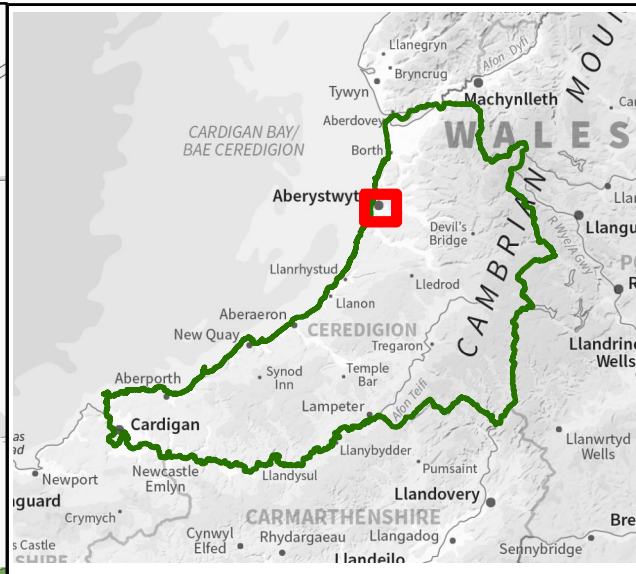
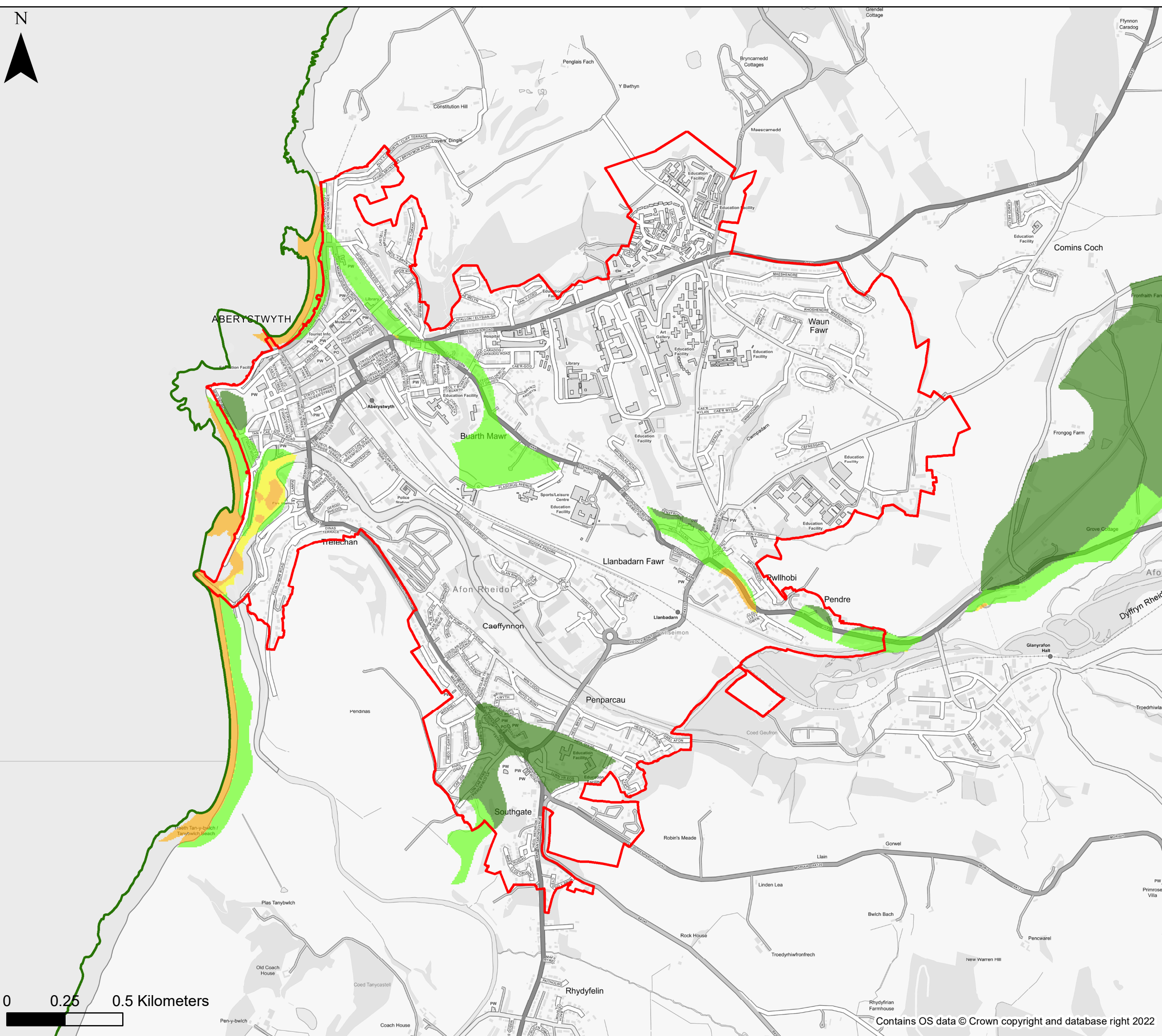










0 0.25 0.5 Kilometers



KEY

-  Ceredigion County Council
-  Settlement Boundary
- Groundwater Depth**
- Indicative Groundwater depth**
-  Groundwater levels are at least 5m below the ground surface.
-  Groundwater levels are between 0.5m and 5m below the ground surface.
-  Groundwater levels are between 0.025m and 0.5m below the ground surface.
-  Groundwater levels are either at or very near (within 0.025m of) the ground surface.

Notes
 The map provides an indicative assessment of groundwater depth on a 5m grid. Please refer to Section 4 of the SFCA Report for further detail of the dataset used to define the potential for groundwater emergence. If no data is displayed on the map, or not all features are present, this indicates that the respective source or features are not present within this area.



Ceredigion County Council

Stage 1 Strategic Flood Consequences Assessment

Groundwater Depth

Settlement Area- Aberystwyth, Llanbadarn Fawr

This document is the property of Jeremy Benn Associates Ltd. It shall not be reproduced in whole or in part, nor disclosed to a third party, without the permission of Jeremy Benn Associates Ltd.

Drawn	HB	21/09/2022
Checked	CB	22/09/2022
Approved	GB	23/09/2022