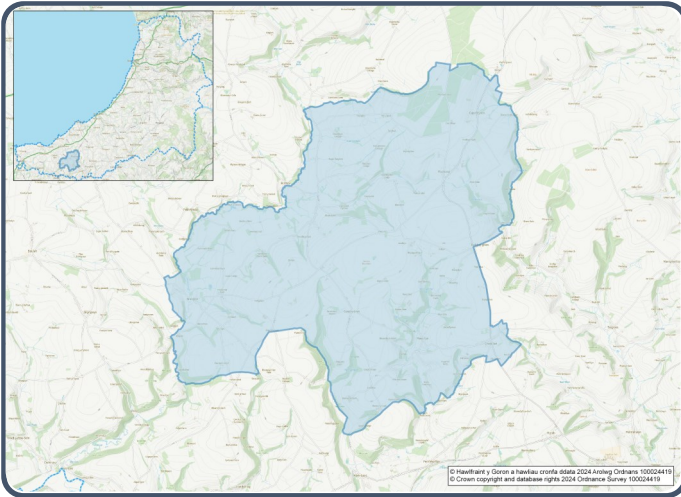


2021 Census Area Profiles – Lower Super Output Area (LSOA)

W01000551 - Troedryraur



Population:



1,380 residents



Females

710



Males

670

Population Change (2011-2021)

+5.3%

56 Students

(people over 16 who are engaged in full-time courses of study in secondary, tertiary or higher education institutions)

14.8% aged 0 - 14

56.2% aged 15 - 64

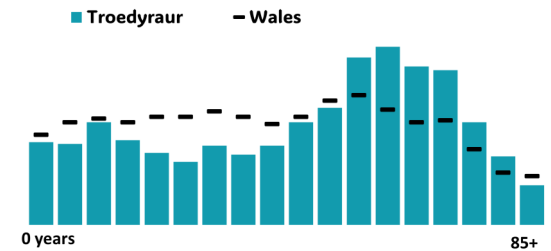
29.0% aged 65+

1.6% BAME

98.3% White

0.1% Other Ethnic Group

Age profile



Health & Disability:



21.2%

Disabled under the Equality Act



9.2%

Day-to-day activities limited a lot



78.2%

In good or very good health



10.4%

Provides unpaid care

Households:



591 Households



3.2%

Households without central heating



56.2%

Households deprived in one or more deprivation dimensions



1.5% Overcrowded Households

Welsh Language:



49.9% Can speak Welsh

Age breakdown of Welsh speakers

0-15: 10.6%

16-64: 27.4%

65+: 10.7%



42.8% Have NO skills in Welsh

Economy:



49.8% Employment Rate



15.6% Achieving level 2 qualification



48.6% Economic Inactivity



19.4% No Qualifications

Demography, Ethnicity, Identity & Religion:

	LSOA		Ceredigion
	No.	%	%
Population			
Population 2021	1,380	-	71,475
Population 2011	1,310	-	75,922
<i>Population change (2011-21)</i>	+70	+ 5.3%	- 5.8%
Population density	42.3	-	40.0
Sex			
Males	670	48.6%	48.9%
Females	710	51.4%	51.1%
Age			
Aged 0 to 4	63	4.6%	3.8%
Aged 5 to 19	206	14.9%	16.1%
Aged 20 to 29	103	7.5%	14.0%
Aged 30 to 44	174	12.6%	13.8%
Aged 45 to 59	296	21.5%	19.3%
Aged 60 to 64	137	9.9%	7.2%
Aged 65 to 74	239	17.3%	13.9%
Aged 75 and over	161	11.7%	11.8%
Country of birth			
Born in UK	1,332	96.7%	92.9%
Born outside of UK	46	3.3%	7.1%
National Identity			
One or more UK identity	1,342	97.2%	93.4%
UK identity and non-UK identity	16	1.2%	1.7%
Non-UK identity	23	1.7%	4.9%
Religion			
Christian	674	48.9%	46.7%
No religion	548	39.8%	43.0%
Other religion	14	1.0%	2.6%

Housing & Household Composition:

	LSOA		Ceredigion
	No	%	%
Tenure			
Owned	484	82.0%	68.6%
Private rented	57	9.7%	20.6%
Social rented	49	8.3%	10.5%
Shared ownership	0	0.0%	0.3%
Lives rent free	0	0.0%	0.0%
Accommodation Type			
Detached	445	75.0%	50.7%
Semi detached	122	20.6%	23.1%
Terraced	12	2.0%	14.1%
Flat, maisonette or apartment	10	1.7%	11.3%
Caravan or other mobile temporary	4	0.7%	0.8%
Household composition			
One person household	157	26.5%	33.0%
Single family household	400	67.5%	60.4%
Other household types	36	6.1%	6.6%
Central Heating			
No central heating	19	3.2%	2.6%
Occupancy Rating			
Overcrowded households	9	1.5%	1.4%
Number of bedrooms			
1 bedroom	22	3.7%	7.4%
2 bedrooms	123	20.8%	23.6%
3 bedrooms	253	42.8%	42.5%
4+ bedrooms	193	32.7%	26.5%
Number of cars or vans			
No car or van	37	6.3%	15.7%
Deprivation			
Households deprived in one or more deprivation dimensions	333	56.2%	52.9%

Labour Market & Education:

	LSOA		Ceredigion
	No	%	%
Economic activity status			
Economically active (in employment)	551	47.3%	46.8%
Economically active (unemployed)	29	2.5%	1.8%
Economically inactive	566	48.6%	47.9%
<i>Retired</i>	385	33.1%	27.7%
<i>Student</i>	39	3.4%	10.0%
<i>Looking after home or family</i>	51	4.4%	3.5%
<i>Long-term sick or disabled</i>	45	3.9%	4.4%
Top 3 Industries			
Public administration, education and health	162	28.9%	35.1%
Distribution, hotels and restaurants	107	19.1%	21.8%
Agriculture, energy and water	77	13.8%	9.0%
Education			
No Qualifications (all aged 16+)	226	19.4%	14.7%
Qualifications Level 2	182	15.6%	13.7%
Apprenticeship	84	7.2%	5.4%
Travel to Work			
Work mainly at/from home	201	35.4%	31.6%
Driving car/van	324	57.0%	51.1%
Bus	1	0.2%	1.3%
On foot	14	2.5%	10.0%