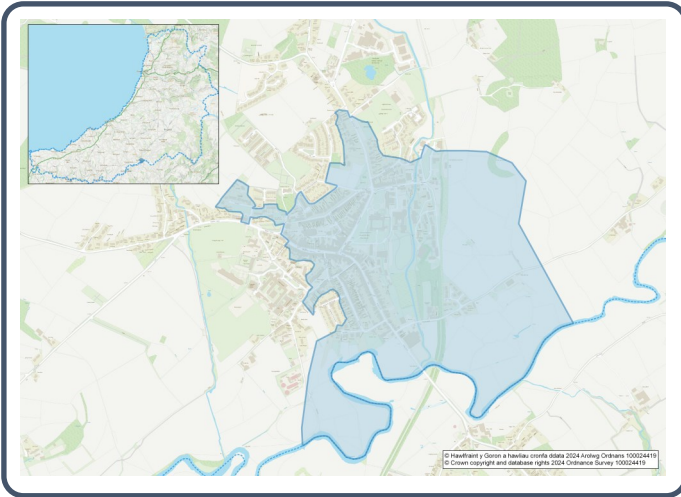


# 2021 Census Area Profiles – Lower Super Output Area (LSOA) W01000527 - Lampeter 1



## Population:



**1,152 residents**



**Females**

**592**



**Males**

**560**

**Population Change  
(2011-2021)**

**▼ -23.7%**

**258  
Students**

(people over 16 who are engaged in full-time courses of study in secondary, tertiary or higher education institutions)

**14.6% aged 0 - 14**

**68.8% aged 15 - 64**

**16.6% aged 65+**

**8.9% BAME**

**87.5% White**

**3.6% Other Ethnic Group**

Age profile

■ Lampeter 1    - Wales



## Health & Disability:



**20.1%**

**Disabled under the Equality Act**



**8.3%**

**Day-to-day activities limited a lot**



**80.3%**

**In good or very good health**



**7.1%**

**Provides unpaid care**

## Households:



**430**

**Households**



**1.9%**

**Households without central heating**



**56.5%**

**Households deprived in one or more deprivation dimensions**



**1.9% Overcrowded Households**

## Welsh Language:



**44.4%**

**Can speak Welsh**

**Age breakdown of Welsh speakers**

**0-15: 9.8%**

**16-64: 23.3%**

**65+: 10.3%**



**47.3%**

**Have NO skills in Welsh**

## Economy:



**43.7%**

**Employment Rate**



**12.4%**

**Achieving level 2 qualification**



**51.9%**

**Economic Inactivity**



**20.0%**

**No Qualifications**

## Demography, Ethnicity, Identity & Religion:

	LSOA		Ceredigion
	No.	%	%
<b>Population</b>			
Population 2021	1,152	-	71,475
Population 2011	1,510	-	75,922
<i>Population change (2011-21)</i>	- 358	- 23.7%	- 5.8%
Population density	1,207.5	-	40.0
<b>Sex</b>			
Males	560	48.6%	48.9%
Females	592	51.4%	51.1%
<b>Age</b>			
Aged 0 to 4	39	3.4%	3.8%
Aged 5 to 19	249	21.6%	16.1%
Aged 20 to 29	247	21.4%	14.0%
Aged 30 to 44	192	16.6%	13.8%
Aged 45 to 59	186	16.1%	19.3%
Aged 60 to 64	50	4.3%	7.2%
Aged 65 to 74	88	7.6%	13.9%
Aged 75 and over	103	8.9%	11.8%
<b>Country of birth</b>			
Born in UK	919	79.8%	92.9%
Born outside of UK	233	20.2%	7.1%
<b>National Identity</b>			
One or more UK identity	942	81.8%	93.4%
UK identity and non-UK identity	20	1.7%	1.7%
Non-UK identity	190	16.5%	4.9%
<b>Religion</b>			
Christian	495	42.9%	46.7%
No religion	455	39.5%	43.0%
Other religion	114	9.9%	2.6%

## Housing & Household Composition:

	LSOA		Ceredigion
	No	%	%
<b>Tenure</b>			
Owned	206	47.9%	68.6%
Private rented	181	42.1%	20.6%
Social rented	43	10.0%	10.5%
Shared ownership	0	0.0%	0.3%
Lives rent free	0	0.0%	0.0%
<b>Accommodation Type</b>			
Detached	66	15.3%	50.7%
Semi detached	94	21.8%	23.1%
Terraced	168	39.0%	14.1%
Flat, maisonette or apartment	103	23.9%	11.3%
Caravan or other mobile temporary	0	0.0%	0.8%
<b>Household composition</b>			
One person household	167	38.7%	33.0%
Single family household	234	54.3%	60.4%
Other household types	30	7.0%	6.6%
<b>Central Heating</b>			
No central heating	8	1.9%	2.6%
<b>Occupancy Rating</b>			
Overcrowded households	8	1.9%	1.4%
<b>Number of bedrooms</b>			
1 bedroom	57	13.3%	7.4%
2 bedrooms	105	24.5%	23.6%
3 bedrooms	156	36.4%	42.5%
4+ bedrooms	111	25.9%	26.5%
<b>Number of cars or vans</b>			
No car or van	128	29.7%	15.7%
<b>Deprivation</b>			
Households deprived in one or more deprivation dimensions	243	56.5%	52.9%

## Labour Market & Education:

	LSOA		Ceredigion
	No	%	%
<b>Economic activity status</b>			
Economically active (in employment)	395	41.0%	46.8%
Economically active (unemployed)	26	2.7%	1.8%
Economically inactive	500	51.9%	47.9%
<i>Retired</i>	178	18.5%	27.7%
<i>Student</i>	223	23.2%	10.0%
<i>Looking after home or family</i>	26	2.7%	3.5%
<i>Long-term sick or disabled</i>	49	5.1%	4.4%
<b>Top 3 Industries</b>			
Public administration, education and health	125	29.8%	35.1%
Distribution, hotels and restaurants	115	27.4%	21.8%
Manufacturing	49	11.7%	4.7%
<b>Education</b>			
No Qualifications (all aged 16+)	193	20.0%	14.7%
Qualifications Level 2	120	12.4%	13.7%
Apprenticeship	34	3.5%	5.4%
<b>Travel to Work</b>			
Work mainly at/from home	90	21.1%	31.6%
Driving car/van	189	44.4%	51.1%
Bus	10	2.3%	1.3%
On foot	93	21.8%	10.0%