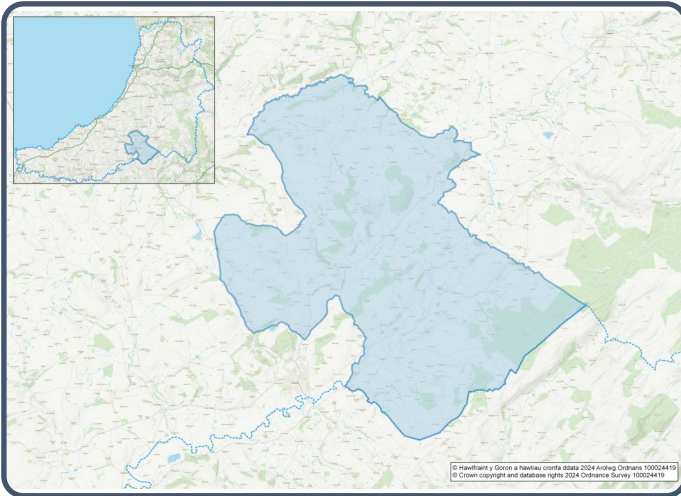


# 2021 Census Area Profiles – Lower Super Output Area (LSOA)

## W01000537 - Llangybi



### Population:



**1,390 residents**



**Females**  
715



**Males**  
675

### Population Change (2011-2021)

**-6.3%**

**48 Students**

(people over 16 who are engaged in full-time courses of study in secondary, tertiary or higher education institutions)

**12.9% aged 0 - 14**

**56.1% aged 15 - 64**

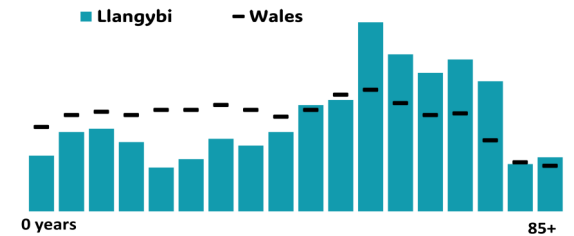
**31.0% aged 65+**

**0.6% BAME**

**99.2% White**

**0.2% Other Ethnic Group**

Age profile



### Health & Disability:



**21.9%**

**Disabled under the Equality Act**



**9.1%**

**Day-to-day activities limited a lot**



**77.7%**

**In good or very good health**



**12.3%**

**Provides unpaid care**

### Households:



**637 Households**



**3.8%**

**Households without central heating**



**51.3%**

**Households deprived in one or more deprivation dimensions**



**1.4% Overcrowded Households**

### Welsh Language:



**43.9%**  
**Can speak Welsh**

**Age breakdown of Welsh speakers**

**0-15: 9.8%**

**16-64: 24.4%**

**65+: 8.8%**



**46.9%**  
**Have NO skills in Welsh**

### Economy:



**51.3%**  
**Employment Rate**



**14.4%**  
**Achieving level 2 qualification**



**47.3%**  
**Economic Inactivity**



**13.2%**  
**No Qualifications**

## Demography, Ethnicity, Identity & Religion:

	LSOA		Ceredigion
	No.	%	%
<b>Population</b>			
Population 2021	1,390	-	71,475
Population 2011	1,484	-	75,922
Population change (2011-21)	-94	-6.3%	-5.8%
Population density	19.1	-	40.0
<b>Sex</b>			
Males	675	48.6%	48.9%
Females	715	51.4%	51.1%
<b>Age</b>			
Aged 0 to 4	46	3.3%	3.8%
Aged 5 to 19	190	13.7%	16.1%
Aged 20 to 29	79	5.7%	14.0%
Aged 30 to 44	178	12.8%	13.8%
Aged 45 to 59	336	24.2%	19.3%
Aged 60 to 64	129	9.3%	7.2%
Aged 65 to 74	239	17.2%	13.9%
Aged 75 and over	191	13.8%	11.8%
<b>Country of birth</b>			
Born in UK	1,330	95.5%	92.9%
Born outside of UK	62	4.5%	7.1%
<b>National Identity</b>			
One or more UK identity	1,325	95.1%	93.4%
UK identity and non-UK identity	27	1.9%	1.7%
Non-UK identity	42	3.0%	4.9%
<b>Religion</b>			
Christian	659	47.4%	46.7%
No religion	555	39.9%	43.0%
Other religion	57	4.1%	2.6%

## Housing & Household Composition:

	LSOA		Ceredigion
	No	%	%
<b>Tenure</b>			
Owned	519	81.3%	68.6%
Private rented	100	15.7%	20.6%
Social rented	14	2.2%	10.5%
Shared ownership	5	0.8%	0.3%
Lives rent free	0	0.0%	0.0%
<b>Accommodation Type</b>			
Detached	490	76.9%	50.7%
Semi detached	96	15.1%	23.1%
Terraced	28	4.4%	14.1%
Flat, maisonette or apartment	16	2.5%	11.3%
Caravan or other mobile temporary	7	1.1%	0.8%
<b>Household composition</b>			
One person household	208	32.7%	33.0%
Single family household	392	61.6%	60.4%
Other household types	36	5.7%	6.6%
<b>Central Heating</b>			
No central heating	24	3.8%	2.6%
<b>Occupancy Rating</b>			
Overcrowded households	9	1.4%	1.4%
<b>Number of bedrooms</b>			
1 bedroom	25	3.9%	7.4%
2 bedrooms	138	21.7%	23.6%
3 bedrooms	277	43.5%	42.5%
4+ bedrooms	197	30.9%	26.5%
<b>Number of cars or vans</b>			
No car or van	49	7.7%	15.7%
<b>Deprivation</b>			
Households deprived in one or more deprivation dimensions	327	51.3%	52.9%

## Labour Market & Education:

	LSOA		Ceredigion
	No	%	%
<b>Economic activity status</b>			
Economically active (in employment)	598	50.0%	46.8%
Economically active (unemployed)	16	1.3%	1.8%
Economically inactive	566	47.3%	47.9%
<i>Retired</i>	400	33.4%	27.7%
<i>Student</i>	38	3.2%	10.0%
<i>Looking after home or family</i>	54	4.5%	3.5%
<i>Long-term sick or disabled</i>	51	4.3%	4.4%
<b>Top 3 Industries</b>			
Public administration, education and health	175	28.9%	35.1%
Distribution, hotels and restaurants	118	19.5%	21.8%
Agriculture, energy and water	97	16.0%	9.0%
<b>Education</b>			
No Qualifications (all aged 16+)	158	13.2%	14.7%
Qualifications Level 2	172	14.4%	13.7%
Apprenticeship	77	6.4%	5.4%
<b>Travel to Work</b>			
Work mainly at/from home	230	37.8%	31.6%
Driving car/van	323	53.1%	51.1%
Bus	13	2.1%	1.3%
On foot	21	3.5%	10.0%