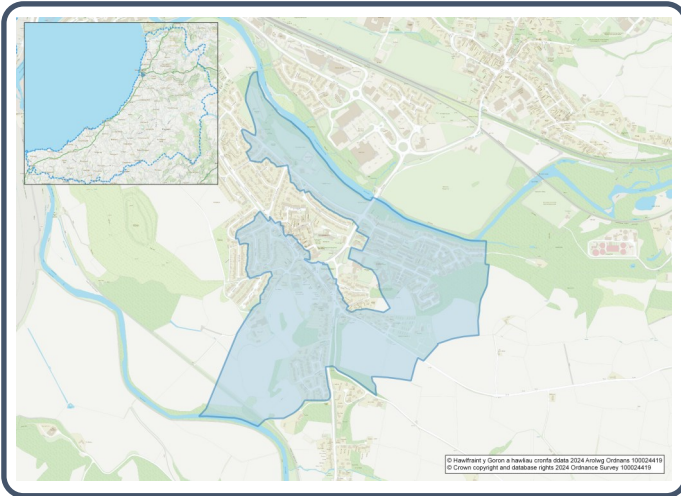


2021 Census Area Profiles – Lower Super Output Area (LSOA) W01000516 - Aberystwyth Penparcau 2



Population:



1,643 residents



Females

870



Males

773

Population Change
(2011-2021)

▼ -2.0%

98

Students

(people over 16 who are engaged in full-time courses of study in secondary, tertiary or higher education institutions)

21.1% aged 0 - 14

62.6% aged 15 – 64

16.3% aged 65+

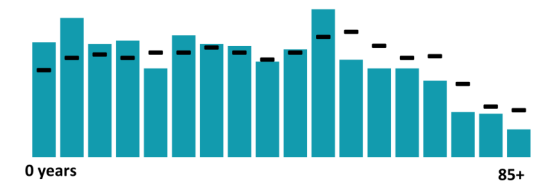
5.2% BAME

94.3% White

0.5% Other Ethnic Group

Age profile

■ Aberystwyth Penparcau 2 – Wales



Health & Disability:



20.5%

Disabled under the Equality Act



9.3%

Day-to-day activities limited a lot



80.4%

In good or very good health



9.3%

Provides unpaid care

Households:



691

Households



1.2%

Households without central heating



54.8%

Households deprived in one or more deprivation dimensions



2.5% Overcrowded Households

Welsh Language:



31.9%

Can speak Welsh

Age breakdown of Welsh speakers

0-15: 7.2%

16-64: 17.5%

65+: 5.9%



49.6%

Have NO skills in Welsh

Economy:



58.6%

Employment Rate



14.3%

Achieving level 2 qualification



39.0%

Economic Inactivity



17.4%

No Qualifications

Demography, Ethnicity, Identity & Religion:

	LSOA		Ceredigion
	No.	%	%
Population			
Population 2021	1,643	-	71,475
Population 2011	1,676	-	75,922
Population change (2011-21)	- 33	- 2.0%	- 5.8%
Population density	2,261.8	-	40.0
Sex			
Males	773	47.0%	48.9%
Females	870	53.0%	51.1%
Age			
Aged 0 to 4	108	6.6%	3.8%
Aged 5 to 19	348	21.2%	16.1%
Aged 20 to 29	199	12.1%	14.0%
Aged 30 to 44	302	18.4%	13.8%
Aged 45 to 59	334	20.3%	19.3%
Aged 60 to 64	83	5.1%	7.2%
Aged 65 to 74	157	9.6%	13.9%
Aged 75 and over	111	6.8%	11.8%
Country of birth			
Born in UK	1,528	93.1%	92.9%
Born outside of UK	114	6.9%	7.1%
National Identity			
One or more UK identity	1,513	92.0%	93.4%
UK identity and non-UK identity	42	2.6%	1.7%
Non-UK identity	89	5.4%	4.9%
Religion			
Christian	699	42.6%	46.7%
No religion	807	49.2%	43.0%
Other religion	48	2.9%	2.6%

Housing & Household Composition:

	LSOA		Ceredigion
	No	%	%
Tenure			
Owned	351	50.9%	68.6%
Private rented	139	20.1%	20.6%
Social rented	200	29.0%	10.5%
Shared ownership	0	0.0%	0.3%
Lives rent free	0	0.0%	0.0%
Accommodation Type			
Detached	74	10.7%	50.7%
Semi detached	266	38.6%	23.1%
Terraced	279	40.5%	14.1%
Flat, maisonette or apartment	55	8.0%	11.3%
Caravan or other mobile temporary	15	2.2%	0.8%
Household composition			
One person household	205	29.7%	33.0%
Single family household	464	67.1%	60.4%
Other household types	22	3.2%	6.6%
Central Heating			
No central heating	8	1.2%	2.6%
Occupancy Rating			
Overcrowded households	17	2.5%	1.4%
Number of bedrooms			
1 bedroom	20	2.9%	7.4%
2 bedrooms	226	32.7%	23.6%
3 bedrooms	369	53.4%	42.5%
4+ bedrooms	76	11.0%	26.5%
Number of cars or vans			
No car or van	160	23.2%	15.7%
Deprivation			
Households deprived in one or more deprivation dimensions	379	54.8%	52.9%

Labour Market & Education:

	LSOA		Ceredigion
	No	%	%
Economic activity status			
Economically active (in employment)	722	56.7%	46.8%
Economically active (unemployed)	24	1.9%	1.8%
Economically inactive	497	39.0%	47.9%
<i>Retired</i>	251	19.7%	27.7%
<i>Student</i>	70	5.5%	10.0%
<i>Looking after home or family</i>	51	4.0%	3.5%
<i>Long-term sick or disabled</i>	80	6.3%	4.4%
Top 3 Industries			
Public administration, education and health	298	39.9%	35.1%
Distribution, hotels and restaurants	221	29.6%	21.8%
Construction	66	8.8%	8.6%
Education			
No Qualifications (all aged 16+)	222	17.4%	14.7%
Qualifications Level 2	182	14.3%	13.7%
Apprenticeship	88	6.9%	5.4%
Travel to Work			
Work mainly at/from home	146	19.5%	31.6%
Driving car/van	364	48.6%	51.1%
Bus	9	1.2%	1.3%
On foot	132	17.6%	10.0%