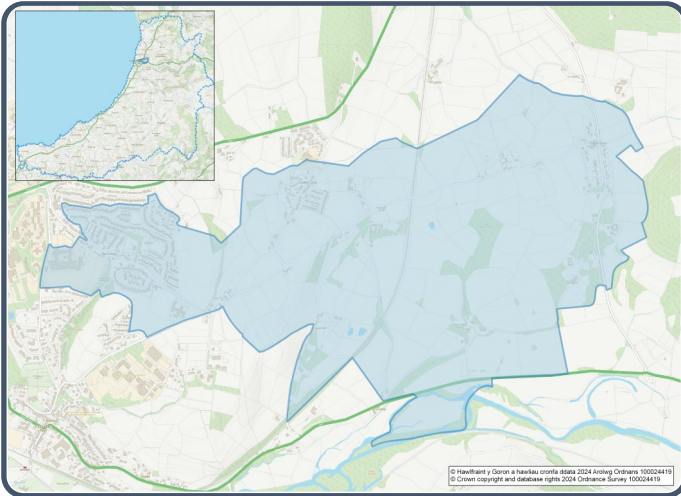


2021 Census Area Profiles – Lower Super Output Area (LSOA)

W01000525– Faenor



Population:



1,226 residents



Females
674



Males
552

Population Change
(2011-2021)
+1.7%

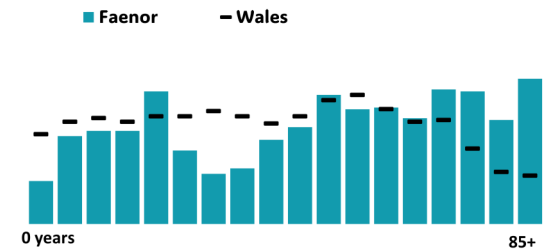
101 Students

(people over 16 who are engaged in full-time courses of study in secondary, tertiary or higher education institutions)

12.6% aged 0 - 14
52.8% aged 15 – 64
34.7% aged 65+

9.8% BAME
89.1% White
1.1% Other Ethnic Group

Age profile



Health & Disability:



21.6%
Disabled under the Equality Act



10.2%
Day-to-day activities limited a lot



80.0%
In good or very good health



10.4%
Provides unpaid care

Households:



509 Households



0.0%
Households without central heating



42.4%

Households deprived in one or more deprivation dimensions



0.8% Overcrowded Households

Welsh Language:



46.7%
Can speak Welsh

Age breakdown of Welsh speakers

0-15: 8.3%

16-64: 21.5%

65+: 16.2%



40.7%
Have NO skills in Welsh

Economy:



46.6%
Employment Rate



12.6%
Achieving level 2 qualification



51.5%
Economic Inactivity



8.9%
No Qualifications

Demography, Ethnicity, Identity & Religion:

	LSOA		Ceredigion
	No.	%	%
Population			
Population 2021	1,226	-	71,475
Population 2011	1,206	-	75,922
<i>Population change (2011-21)</i>	+20	+1.7%	- 5.8%
Population density	373.4	-	40.0
Sex			
Males	552	45.0%	48.9%
Females	674	55.0%	51.1%
Age			
Aged 0 to 4	30	2.4%	3.8%
Aged 5 to 19	188	15.3%	16.1%
Aged 20 to 29	141	11.5%	14.0%
Aged 30 to 44	130	10.6%	13.8%
Aged 45 to 59	232	18.9%	19.3%
Aged 60 to 64	80	6.5%	7.2%
Aged 65 to 74	164	13.4%	13.9%
Aged 75 and over	261	21.3%	11.8%
Country of birth			
Born in UK	1,067	87.2%	92.9%
Born outside of UK	157	12.8%	7.1%
National Identity			
One or more UK identity	1,103	90.2%	93.4%
UK identity and non-UK identity	28	2.3%	1.7%
Non-UK identity	92	7.5%	4.9%
Religion			
Christian	761	62.0%	46.7%
No religion	361	29.4%	43.0%
Other religion	37	3.0%	2.6%

Housing & Household Composition:

	LSOA		Ceredigion
	No	%	%
Tenure			
Owned	406	79.9%	68.6%
Private rented	92	18.1%	20.6%
Social rented	8	1.6%	10.5%
Shared ownership	2	0.4%	0.3%
Lives rent free	0	0.0%	0.0%
Accommodation Type			
Detached	324	63.5%	50.7%
Semi detached	157	30.8%	23.1%
Terraced	24	4.7%	14.1%
Flat, maisonette or apartment	5	1.0%	11.3%
Caravan or other mobile temporary	0	0.0%	0.8%
Household composition			
One person household	145	28.4%	33.0%
Single family household	335	65.7%	60.4%
Other household types	30	5.9%	6.6%
Central Heating			
No central heating	0	0.0%	2.6%
Occupancy Rating			
Overcrowded households	4	0.8%	1.4%
Number of bedrooms			
1 bedroom	7	1.4%	7.4%
2 bedrooms	63	12.3%	23.6%
3 bedrooms	243	47.6%	42.5%
4+ bedrooms	198	38.7%	26.5%
Number of cars or vans			
No car or van	64	12.5%	15.7%
Deprivation			
Households deprived in one or more deprivation dimensions	218	42.4%	52.9%

Labour Market & Education:

	LSOA		Ceredigion
	No	%	%
Economic activity status			
Economically active (in employment)	480	45.3%	46.8%
Economically active (unemployed)	14	1.3%	1.8%
Economically inactive	546	51.5%	47.9%
<i>Retired</i>	394	37.2%	27.7%
<i>Student</i>	87	8.2%	10.0%
<i>Looking after home or family</i>	7	0.7%	3.5%
<i>Long-term sick or disabled</i>	35	3.3%	4.4%
Top 3 Industries			
Public administration, education and health	257	52.3%	35.1%
Distribution, hotels and restaurants	69	14.1%	21.8%
Construction	42	8.6%	8.6%
Education			
No Qualifications (all aged 16+)	94	8.9%	14.7%
Qualifications Level 2	134	12.6%	13.7%
Apprenticeship	56	5.3%	5.4%
Travel to Work			
Work mainly at/from home	138	28.0%	31.6%
Driving car/van	264	53.5%	51.1%
Bus	1	0.2%	1.3%
On foot	49	9.9%	10.0%