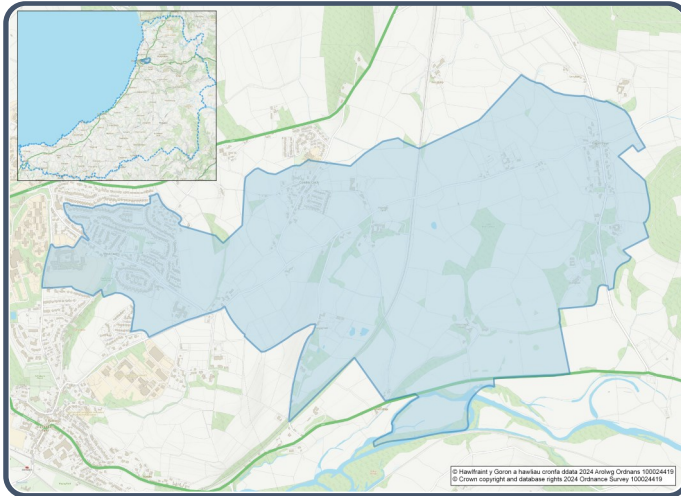


# 2021 Census Area Profiles – Lower Super Output Area (LSOA)

## W01000525– Faenor (Ceredigion)



### Population:



**1,226 residents**



**Females**

**674**



**Males**

**552**

**Population Change**  
(2011-2021)

**+1.7%**

**101 Students**

(people over 16 who are engaged in full-time courses of study in secondary, tertiary or higher education institutions)

**12.6% aged 0 - 14**

**52.8% aged 15 – 64**

**34.7% aged 65+**

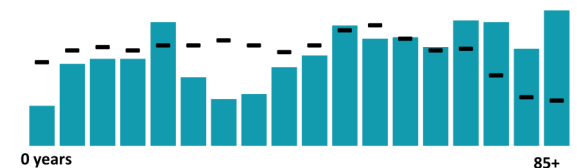
**9.8% BAME**

**89.1% White**

**1.1% Other Ethnic Group**

Age profile

■ Faenor (Ceredigion) – Wales



### Health & Disability:



**21.6%**

**Disabled under the Equality Act**



**10.2%**

**Day-to-day activities limited a lot**



**80.0%**

**In good or very good health**



**10.4%**

**Provides unpaid care**

### Households:



**509 Households**



**0.0%**

**Households without central heating**



**42.4%**

**Households deprived in one or more deprivation dimensions**



**0.8% Overcrowded Households**

### Welsh Language:



**46.7%**  
**Can speak Welsh**

**Age breakdown of Welsh speakers**

**0-15: 8.3%**

**16-64: 21.5%**

**65+: 16.2%**



**40.7%**

**Have NO skills in Welsh**

### Economy:



**46.6%**  
**Employment Rate**



**12.6%**  
**Achieving level 2 qualification**



**51.5%**  
**Economic Inactivity**



**8.9%**  
**No Qualifications**

## Demography, Ethnicity, Identity & Religion:

	LSOA		Ceredigion
	No.	%	%
<b>Population</b>			
Population 2021	1,226	-	71,475
Population 2011	1,206	-	75,922
Population change (2011-21)	+20	+1.7%	- 5.8%
Population density	373.4	-	40.0
<b>Sex</b>			
Males	552	45.0%	48.9%
Females	674	55.0%	51.1%
<b>Age</b>			
Aged 0 to 4	30	2.4%	3.8%
Aged 5 to 19	188	15.3%	16.1%
Aged 20 to 29	141	11.5%	14.0%
Aged 30 to 44	130	10.6%	13.8%
Aged 45 to 59	232	18.9%	19.3%
Aged 60 to 64	80	6.5%	7.2%
Aged 65 to 74	164	13.4%	13.9%
Aged 75 and over	261	21.3%	11.8%
<b>Country of birth</b>			
Born in UK	1,067	87.2%	92.9%
Born outside of UK	157	12.8%	7.1%
<b>National Identity</b>			
One or more UK identity	1,103	90.2%	93.4%
UK identity and non-UK identity	28	2.3%	1.7%
Non-UK identity	92	7.5%	4.9%
<b>Religion</b>			
Christian	761	62.0%	46.7%
No religion	361	29.4%	43.0%
Other religion	37	3.0%	2.6%

## Housing & Household Composition:

	LSOA		Ceredigion
	No	%	%
<b>Tenure</b>			
Owned	406	79.9%	68.6%
Private rented	92	18.1%	20.6%
Social rented	8	1.6%	10.5%
Shared ownership	2	0.4%	0.3%
Lives rent free	0	0.0%	0.0%
<b>Accommodation Type</b>			
Detached	324	63.5%	50.7%
Semi detached	157	30.8%	23.1%
Terraced	24	4.7%	14.1%
Flat, maisonette or apartment	5	1.0%	11.3%
Caravan or other mobile temporary	0	0.0%	0.8%
<b>Household composition</b>			
One person household	145	28.4%	33.0%
Single family household	335	65.7%	60.4%
Other household types	30	5.9%	6.6%
<b>Central Heating</b>			
No central heating	0	0.0%	2.6%
<b>Occupancy Rating</b>			
Overcrowded households	4	0.8%	1.4%
<b>Number of bedrooms</b>			
1 bedroom	7	1.4%	7.4%
2 bedrooms	63	12.3%	23.6%
3 bedrooms	243	47.6%	42.5%
4+ bedrooms	198	38.7%	26.5%
<b>Number of cars or vans</b>			
No car or van	64	12.5%	15.7%
<b>Deprivation</b>			
Households deprived in one or more deprivation dimensions	218	42.4%	52.9%

## Labour Market & Education:

	LSOA		Ceredigion
	No	%	%
<b>Economic activity status</b>			
Economically active (in employment)	480	45.3%	46.8%
Economically active (unemployed)	14	1.3%	1.8%
Economically inactive	546	51.5%	47.9%
Retired	394	37.2%	27.7%
Student	87	8.2%	10.0%
Looking after home or family	7	0.7%	3.5%
Long-term sick or disabled	35	3.3%	4.4%
<b>Top 3 Industries</b>			
Public administration, education and health	257	52.3%	35.1%
Distribution, hotels and restaurants	69	14.1%	21.8%
Construction	42	8.6%	8.6%
<b>Education</b>			
No Qualifications (all aged 16+)	94	8.9%	14.7%
Qualifications Level 2	134	12.6%	13.7%
Apprenticeship	56	5.3%	5.4%
<b>Travel to Work</b>			
Work mainly at/from home	138	28.0%	31.6%
Driving car/van	264	53.5%	51.1%
Bus	1	0.2%	1.3%
On foot	49	9.9%	10.0%