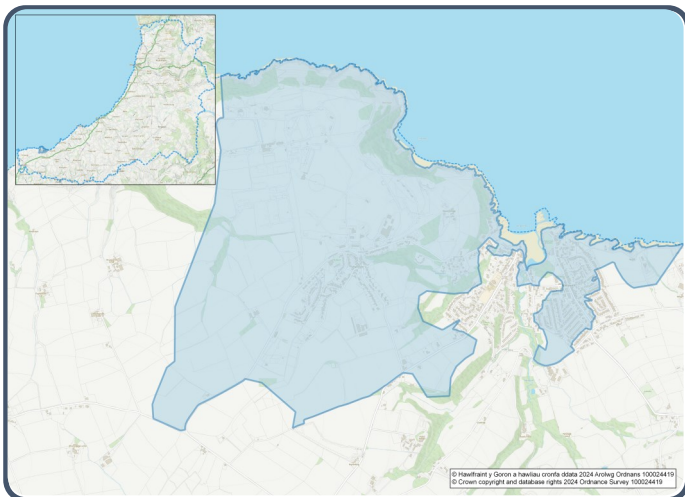


2021 Census Area Profiles – Lower Super Output Area (LSOA) W01000508– Aberporth 2



Population:



1,043 residents



Females

541



Males

502

Population Change (2011-2021)

▼ -11.5%

30 Students

(people over 16 who are engaged in full-time courses of study in secondary, tertiary or higher education institutions)

16.8% aged 0 - 14

53.8% aged 15 - 64

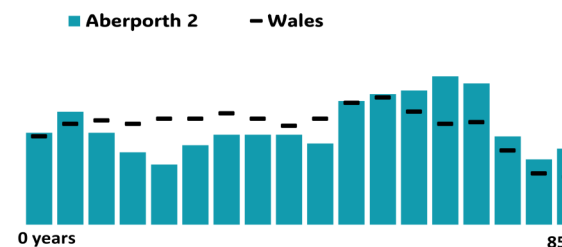
29.4% aged 65+

2.2% BAME

97.7% White

0.1% Other Ethnic Group

Age profile



Health & Disability:



25.0%

Disabled under the Equality Act



12.4%

Day-to-day activities limited a lot



73.9%

In good or very good health



13.9%

Provides unpaid care

Households:



506

Households



0.8%

Households without central heating



57.7%

Households deprived in one or more deprivation dimensions



2.2% Overcrowded Households

Welsh Language:



45.3%

Can speak Welsh

Age breakdown of Welsh speakers

0-15: 10.7%

16-64: 24.5%

65+: 8.6%



43.0%

Have NO skills in Welsh

Economy:



49.8%

Employment Rate



18.6%

Achieving level 2 qualification



49.3%

Economic Inactivity



18.3%

No Qualifications

Demography, Ethnicity, Identity & Religion:

	LSOA		Ceredigion
	No.	%	%
Population			
Population 2021	1,043	-	71,475
Population 2011	1,178	-	75,922
<i>Population change (2011-21)</i>	- 135	- 11.5%	- 5.8%
Population density	295.4	-	40.0
Sex			
Males	502	48.1%	48.9%
Females	541	51.9%	51.1%
Age			
Aged 0 to 4	54	5.2%	3.8%
Aged 5 to 19	164	15.7%	16.1%
Aged 20 to 29	82	7.9%	14.0%
Aged 30 to 44	159	15.2%	13.8%
Aged 45 to 59	198	19.0%	19.3%
Aged 60 to 64	79	7.6%	7.2%
Aged 65 to 74	171	16.4%	13.9%
Aged 75 and over	136	13.0%	11.8%
Country of birth			
Born in UK	1,003	96.2%	92.9%
Born outside of UK	40	3.8%	7.1%
National Identity			
One or more UK identity	1,007	96.5%	93.4%
UK identity and non-UK identity	10	1.0%	1.7%
Non-UK identity	26	2.5%	4.9%
Religion			
Christian	498	47.7%	46.7%
No religion	457	43.8%	43.0%
Other religion	16	1.5%	2.6%

Housing & Household Composition:

	LSOA		Ceredigion
	No	%	%
Tenure			
Owned	300	59.3%	68.6%
Private rented	100	19.8%	20.6%
Social rented	104	20.6%	10.5%
Shared ownership	2	0.4%	0.3%
Lives rent free	0	0.0%	0.0%
Accommodation Type			
Detached	144	28.5%	50.7%
Semi detached	278	54.9%	23.1%
Terraced	37	7.3%	14.1%
Flat, maisonette or apartment	47	9.3%	11.3%
Caravan or other mobile temporary	0	0.0%	0.8%
Household composition			
One person household	190	37.5%	33.0%
Single family household	300	59.3%	60.4%
Other household types	16	3.2%	6.6%
Central Heating			
No central heating	4	0.8%	2.6%
Occupancy Rating			
Overcrowded households	11	2.2%	1.4%
Number of bedrooms			
1 bedroom	39	7.7%	7.4%
2 bedrooms	174	34.4%	23.6%
3 bedrooms	201	39.7%	42.5%
4+ bedrooms	92	18.2%	26.5%
Number of cars or vans			
No car or van	89	17.6%	15.7%
Deprivation			
Households deprived in one or more deprivation dimensions	292	57.7%	52.9%

Labour Market & Education:

	LSOA		Ceredigion
	No	%	%
Economic activity status			
Economically active (in employment)	403	47.0%	46.8%
Economically active (unemployed)	24	2.8%	1.8%
Economically inactive	423	49.3%	47.9%
<i>Retired</i>	284	33.1%	27.7%
<i>Student</i>	22	2.6%	10.0%
<i>Looking after home or family</i>	45	5.2%	3.5%
<i>Long-term sick or disabled</i>	61	7.1%	4.4%
Top 3 Industries			
Public administration, education and health	144	35.1%	35.1%
Distribution, hotels and restaurants	95	23.2%	21.8%
Construction	54	13.2%	8.6%
Education			
No Qualifications (all aged 16+)	157	18.3%	14.7%
Qualifications Level 2	160	18.6%	13.7%
Apprenticeship	51	5.9%	5.4%
Travel to Work			
Work mainly at/from home	84	20.6%	31.6%
Driving car/van	261	64.1%	51.1%
Bus	9	2.2%	1.3%
On foot	34	8.4%	10.0%