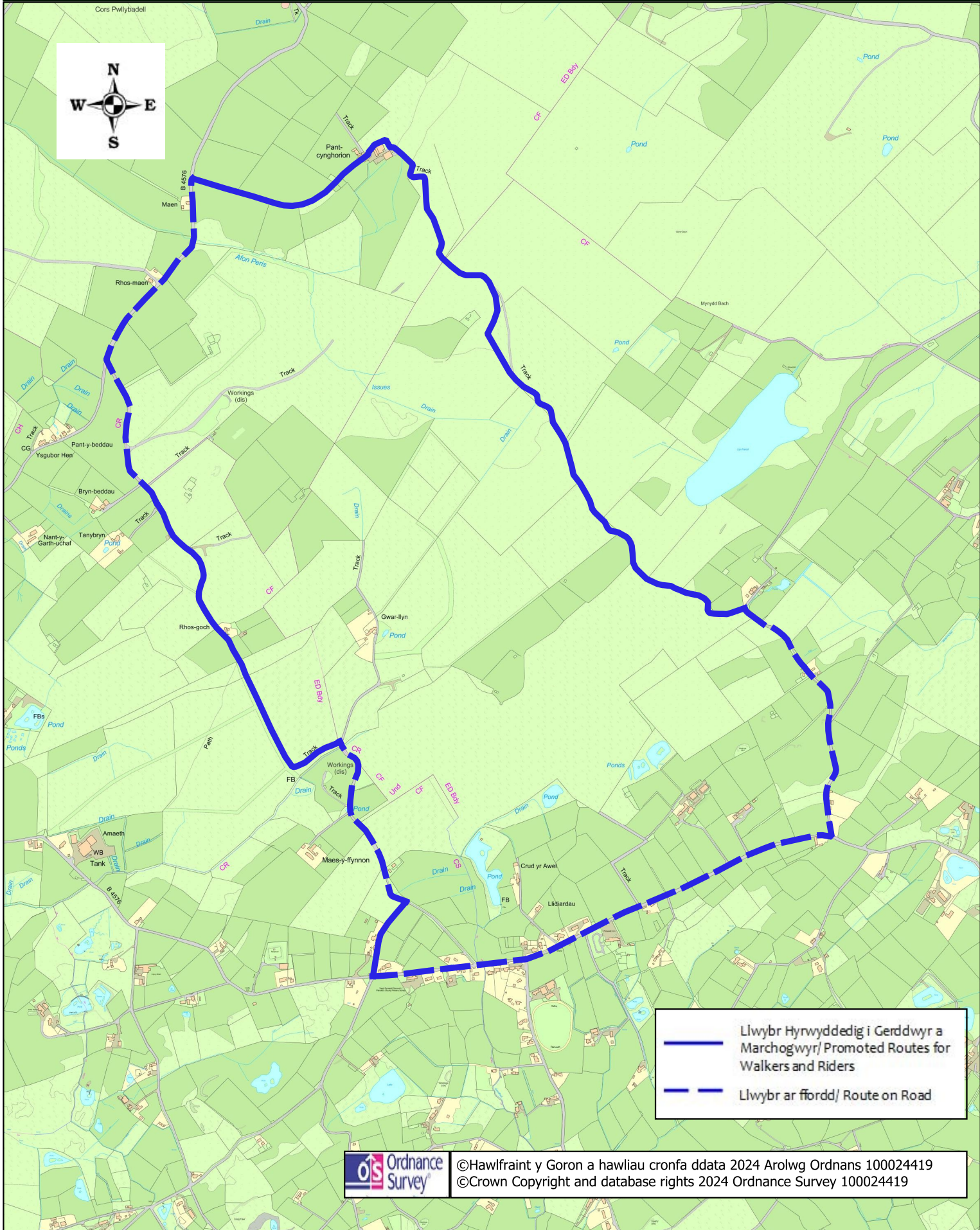
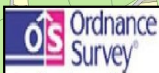




Cors Pwllbadell



— Llwybr Hwrwyddedig i Gerddwyr a Marchogwyr/ Promoted Routes for Walkers and Riders
— Llwybr ar ffordd/ Route on Road



Cyngor Sir Ceredigion

Ceredigion County Council



Cylchdaith Penuwch Circular

Addas ar gyfer: Marchogwyr, Cerddwyr,
Beicwyr

Suitable for: Horseriders, Walkers,
Cyclists

Arwyneb: Ffordd, Trac, Porfa,

Surface: Road, Track, Grass

Dodrefn: 8 gât

Furniture: 8 gates

Pellter: 7.5 km / 4.6 milltir

Distance: 7.5 km / 4.6 miles

Cyfleusterau: Tafarn/Bwyty

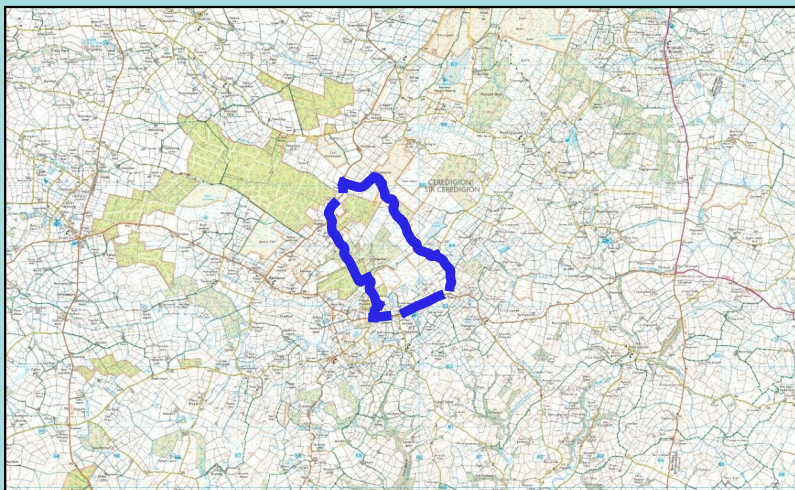
Amenities: Pub/Restaurant

Mapiau: OS Explorer 199
OS Landranger 146

Maps: OS Explorer 199
OS Landranger 146

Gellir adrodd unrhyw broblemau y dewch ar eu traws ar Llwybrau Tramwy trwy ebostio clic@Ceredigion.llyw.cymru

Any problems encountered on Rights of Way can be logged at clic@Ceredigion.gov.uk



Dilynwch Cod Cefn Gwlad bob amser.
Gwelwch

www.cyfoethnaturiolcymru.gov.uk

Always follow the Countryside Code,
which can be found at

www.naturalresourceswales.gov.uk

Proffil y Daith / Route Profile

