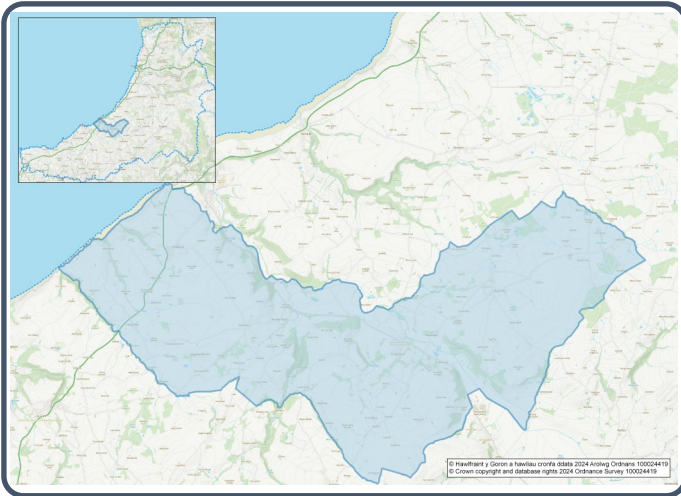


2021 Census Area Profiles – Lower Super Output Area (LSOA) W01000524 - Ciliau Aeron



Population:



1,920 residents



Females

980



Males

940

Population Change (2011-2021)

-2.7%

96 Students

(people over 16 who are engaged in full-time courses of study in secondary, tertiary or higher education institutions)

12.9% aged 0 - 14

58.9% aged 15 - 64

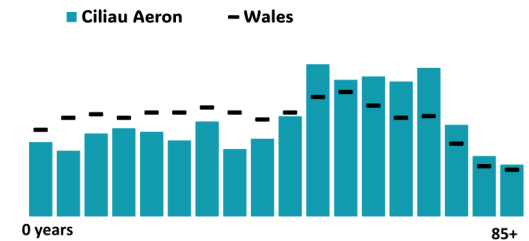
28.2% aged 65+

1.3% BAME

98.4% White

0.3% Other Ethnic Group

Age profile



Health & Disability:



20.5%

Disabled under the Equality Act



9.0%

Day-to-day activities limited a lot



78.7%

In good or very good health



12.8%

Provides unpaid care

Households:



840

Households



2.5%

Households without central heating



53.8%

Households deprived in one or more deprivation dimensions



1.5% Overcrowded Households

Welsh Language:



52.1%

Can speak Welsh

Age breakdown of Welsh speakers

0-15: 9.0%

16-64: 31.1%

65+: 10.8%



36.9%

Have NO skills in Welsh

Economy:



56.0%

Employment Rate



15.4%

Achieving level 2 qualification



42.8%

Economic Inactivity



17.3%

No Qualifications

Demography, Ethnicity, Identity & Religion:

	LSOA		Ceredigion
	No.	%	%
Population			
Population 2021	1,920	-	71,475
Population 2011	1,974	-	75,922
Population change (2011-21)	- 54	- 2.7%	- 5.8%
Population density	47.9	-	40.0
Sex			
Males	940	49.0%	48.9%
Females	980	51.0%	51.1%
Age			
Aged 0 to 4	83	4.3%	3.8%
Aged 5 to 19	261	13.6%	16.1%
Aged 20 to 29	179	9.4%	14.0%
Aged 30 to 44	265	13.9%	13.8%
Aged 45 to 59	431	22.5%	19.3%
Aged 60 to 64	155	8.1%	7.2%
Aged 65 to 74	314	16.4%	13.9%
Aged 75 and over	225	11.8%	11.8%
Country of birth			
Born in UK	1,851	96.4%	92.9%
Born outside of UK	69	3.6%	7.1%
National Identity			
One or more UK identity	1,874	97.5%	93.4%
UK identity and non-UK identity	8	0.4%	1.7%
Non-UK identity	40	2.1%	4.9%
Religion			
Christian	1,027	53.5%	46.7%
No religion	740	38.6%	43.0%
Other religion	25	1.3%	2.6%

Housing & Household Composition:

	LSOA		Ceredigion
	No	%	%
Tenure			
Owned	657	78.2%	68.6%
Private rented	136	16.2%	20.6%
Social rented	39	4.6%	10.5%
Shared ownership	7	0.8%	0.3%
Lives rent free	1	0.1%	0.0%
Accommodation Type			
Detached	599	71.4%	50.7%
Semi detached	197	23.5%	23.1%
Terraced	27	3.2%	14.1%
Flat, maisonette or apartment	9	1.1%	11.3%
Caravan or other mobile temporary	7	0.8%	0.8%
Household composition			
One person household	238	28.3%	33.0%
Single family household	552	65.7%	60.4%
Other household types	50	6.0%	6.6%
Central Heating			
No central heating	21	2.5%	2.6%
Occupancy Rating			
Overcrowded households	13	1.5%	1.4%
Number of bedrooms			
1 bedroom	19	2.3%	7.4%
2 bedrooms	162	19.3%	23.6%
3 bedrooms	412	49.1%	42.5%
4+ bedrooms	246	29.3%	26.5%
Number of cars or vans			
No car or van	72	8.6%	15.7%
Deprivation			
Households deprived in one or more deprivation dimensions	452	53.8%	52.9%

Labour Market & Education:

	LSOA		Ceredigion
	No	%	%
Economic activity status			
Economically active (in employment)	885	53.5%	46.8%
Economically active (unemployed)	41	2.5%	1.8%
Economically inactive	709	42.8%	47.9%
<i>Retired</i>	486	29.4%	27.7%
<i>Student</i>	77	4.7%	10.0%
<i>Looking after home or family</i>	55	3.3%	3.5%
<i>Long-term sick or disabled</i>	63	3.8%	4.4%
Top 3 Industries			
Public administration, education and health	283	31.4%	35.1%
Distribution, hotels and restaurants	182	20.2%	21.8%
Financial, real estate, professional and administrative activities	107	11.9%	10.5%
Education			
No Qualifications (all aged 16+)	286	17.3%	14.7%
Qualifications Level 2	254	15.4%	13.7%
Apprenticeship	93	5.6%	5.4%
Travel to Work			
Work mainly at/from home	333	36.9%	31.6%
Driving car/van	498	55.1%	51.1%
Bus	15	1.7%	1.3%
On foot	25	2.8%	10.0%