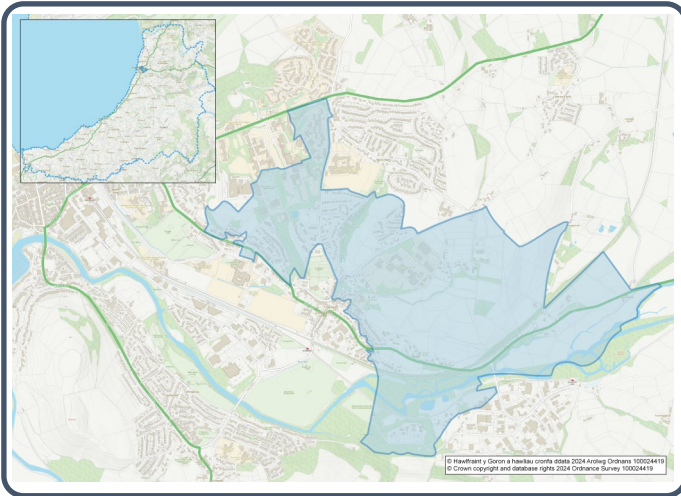


# 2021 Census Area Profiles – Lower Super Output Area (LSOA) W01001936 - Llanbadarn Fawr North



## Population:



**1,453 residents**



**Females**

**734**



**Males**

**719**

**Population Change**  
(2011-2021)

**▼ -36.4%**

**581**  
**Students**

(people over 16 who are engaged in full-time courses of study in secondary, tertiary or higher education institutions)

**8.7% aged 0 - 14**

**74.1% aged 15 - 64**

**17.2% aged 65+**

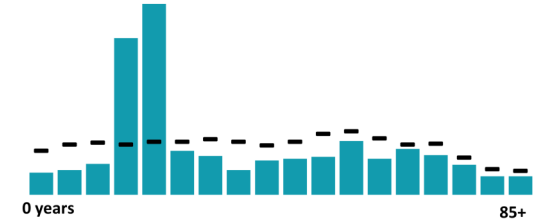
**9.6% BAME**

**88.0% White**

**2.4% Other Ethnic Group**

Age profile

■ Llanbadarn Fawr North – Wales



## Health & Disability:



**22.3%**

**Disabled under the Equality Act**



**7.0%**

**Day-to-day activities limited a lot**



**82.5%**

**In good or very good health**



**7.2%**

**Provides unpaid care**

## Households:



**417**

**Households**



**1.7%**

**Households without central heating**



**49.3%**

**Households deprived in one or more deprivation dimensions**



**0.7% Overcrowded Households**

## Welsh Language:



**28.0%**

**Can speak Welsh**

**Age breakdown of Welsh speakers**

**0-15: 4.8%**

**16-64: 16.1%**

**65+: 6.8%**



**59.5%**

**Have NO skills in Welsh**

## Economy:



**31.2%**

**Employment Rate**



**8.3%**

**Achieving level 2 qualification**



**59.9%**

**Economic Inactivity**



**7.2%**

**No Qualifications**

## Demography, Ethnicity, Identity & Religion:

	LSOA		Ceredigion
	No.	%	%
<b>Population</b>			
Population 2021	1,453	-	71,475
Population 2011	2,285	-	75,922
<i>Population change (2011-21)</i>	- 832	- 36.4%	- 5.8%
Population density	690.5	-	40.0
<b>Sex</b>			
Males	719	49.5%	48.9%
Females	734	50.5%	51.1%
<b>Age</b>			
Aged 0 to 4	36	2.5%	3.8%
Aged 5 to 19	349	24.0%	16.1%
Aged 20 to 29	387	26.6%	14.0%
Aged 30 to 44	160	11.0%	13.8%
Aged 45 to 59	211	14.5%	19.3%
Aged 60 to 64	60	4.1%	7.2%
Aged 65 to 74	140	9.6%	13.9%
Aged 75 and over	110	7.6%	11.8%
<b>Country of birth</b>			
Born in UK	1,208	83.1%	92.9%
Born outside of UK	245	16.9%	7.1%
<b>National Identity</b>			
One or more UK identity	1,233	84.8%	93.4%
UK identity and non-UK identity	37	2.5%	1.7%
Non-UK identity	184	12.7%	4.9%
<b>Religion</b>			
Christian	522	35.9%	46.7%
No religion	684	47.1%	43.0%
Other religion	92	6.3%	2.6%

## Housing & Household Composition:

	LSOA		Ceredigion
	No	%	%
<b>Tenure</b>			
Owned	304	73.1%	68.6%
Private rented	64	15.4%	20.6%
Social rented	47	11.3%	10.5%
Shared ownership	1	0.2%	0.3%
Lives rent free	0	0.0%	0.0%
<b>Accommodation Type</b>			
Detached	228	54.7%	50.7%
Semi detached	84	20.1%	23.1%
Terraced	49	11.8%	14.1%
Flat, maisonette or apartment	53	12.7%	11.3%
Caravan or other mobile temporary	3	0.7%	0.8%
<b>Household composition</b>			
One person household	129	31.0%	33.0%
Single family household	260	62.5%	60.4%
Other household types	27	6.5%	6.6%
<b>Central Heating</b>			
No central heating	7	1.7%	2.6%
<b>Occupancy Rating</b>			
Overcrowded households	3	0.7%	1.4%
<b>Number of bedrooms</b>			
1 bedroom	30	7.2%	7.4%
2 bedrooms	60	14.4%	23.6%
3 bedrooms	172	41.2%	42.5%
4+ bedrooms	155	37.2%	26.5%
<b>Number of cars or vans</b>			
No car or van	61	14.6%	15.7%
<b>Deprivation</b>			
Households deprived in one or more deprivation dimensions	205	49.3%	52.9%

## Labour Market & Education:

	LSOA		Ceredigion
	No	%	%
<b>Economic activity status</b>			
Economically active (in employment)	392	29.9%	46.8%
Economically active (unemployed)	18	1.4%	1.8%
Economically inactive	786	59.9%	47.9%
<i>Retired</i>	225	17.1%	27.7%
<i>Student</i>	469	35.7%	10.0%
<i>Looking after home or family</i>	30	2.3%	3.5%
<i>Long-term sick or disabled</i>	38	2.9%	4.4%
<b>Top 3 Industries</b>			
Public administration, education and health	215	47.8%	35.1%
Distribution, hotels and restaurants	95	21.1%	21.8%
Financial, real estate, professional and administrative activities	43	9.6%	10.5%
<b>Education</b>			
No Qualifications (all aged 16+)	94	7.2%	14.7%
Qualifications Level 2+	108	8.3%	13.7%
Apprenticeship	40	3.1%	5.4%
<b>Travel to Work</b>			
Work mainly at/from home	134	29.8%	31.6%
Driving car/van	183	40.7%	51.1%
Bus	5	1.1%	1.3%
On foot	90	20.0%	10.0%